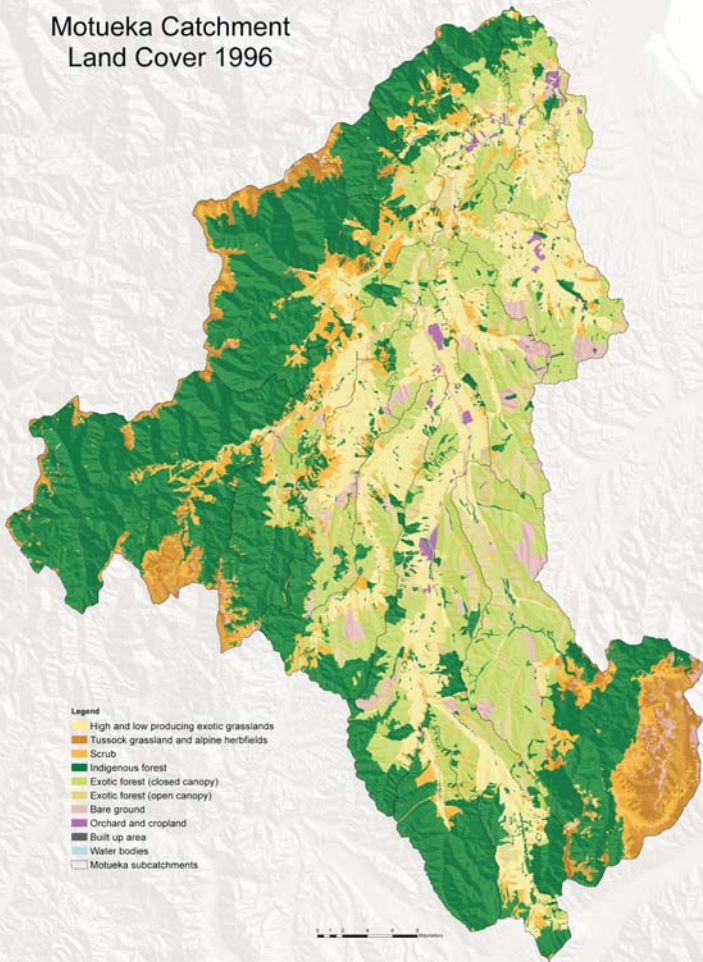


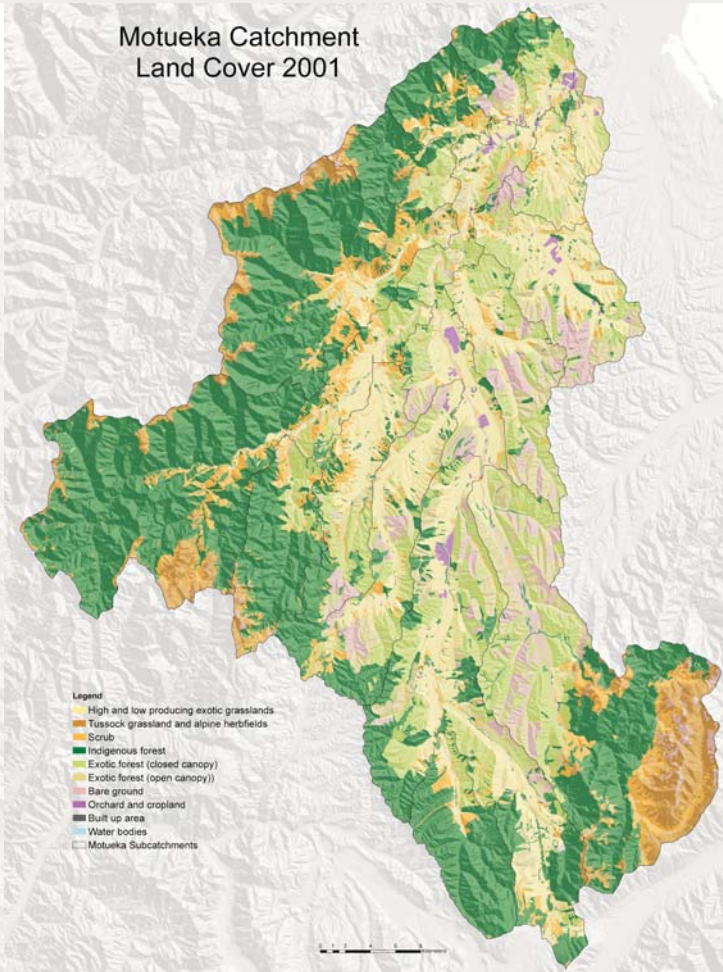
# Land Cover Change Motueka Catchment 1996–2001

Motueka Catchment  
Land Cover 1996



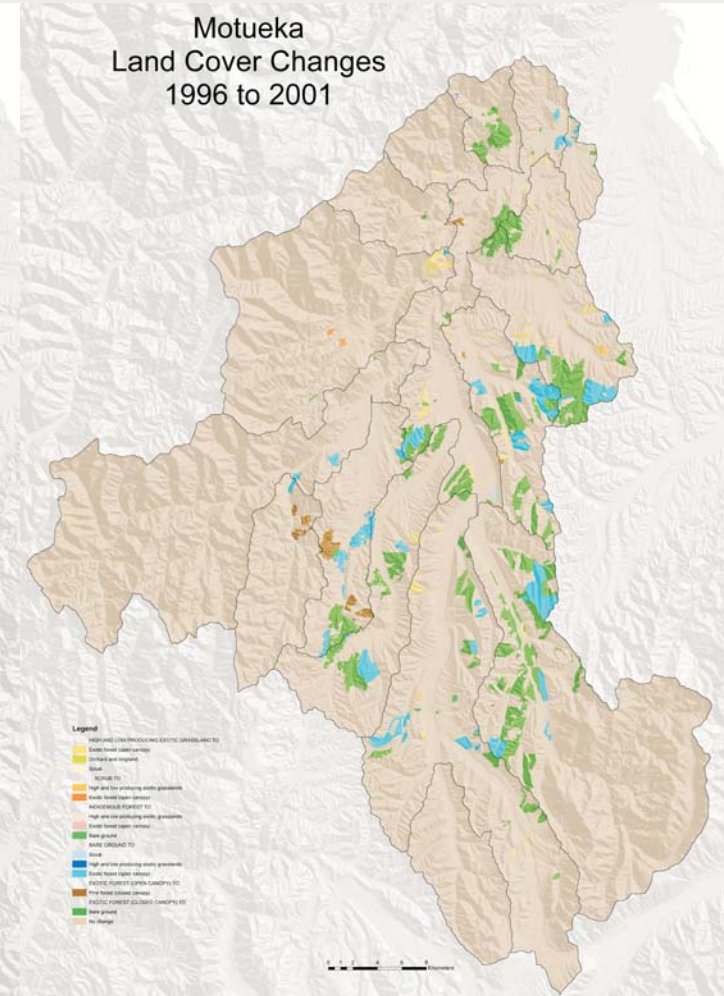
- Legend**
- High and low producing exotic grasslands
  - Tussock grassland and alpine herbfields
  - Scrub
  - Indigenous forest
  - Exotic forest (closed canopy)
  - Exotic forest (open canopy)
  - Bare ground
  - Orchard and cropland
  - Built up area
  - Water bodies
  - Motueka subcatchments

Motueka Catchment  
Land Cover 2001



- Legend**
- High and low producing exotic grasslands
  - Tussock grassland and alpine herbfields
  - Scrub
  - Indigenous forest
  - Exotic forest (closed canopy)
  - Exotic forest (open canopy)
  - Bare ground
  - Orchard and cropland
  - Built up area
  - Water bodies
  - Motueka Subcatchments

Motueka  
Land Cover Changes  
1996 to 2001



- Legend**
- Loss of indigenous forest (dark green)
  - Gain of indigenous forest (dark green)
  - Loss of exotic forest (open canopy) (yellow-green)
  - Gain of exotic forest (open canopy) (yellow-green)
  - Loss of exotic forest (closed canopy) (light green)
  - Gain of exotic forest (closed canopy) (light green)
  - Loss of tussock grassland and alpine herb fields (orange)
  - Gain of tussock grassland and alpine herb fields (orange)
  - Loss of bare ground (brown)
  - Gain of bare ground (brown)
  - Loss of orchard and cropland (purple)
  - Gain of orchard and cropland (purple)
  - Loss of built up area (grey)
  - Gain of built up area (grey)
  - Loss of water bodies (blue)
  - Gain of water bodies (blue)
  - Unchanged (white)

Land cover class 1996	Area hectares	Area %
Bare ground	6387	3.21
Built up area	21	0.01
Exotic forest (closed canopy)	40362	20.26
Exotic forest (open canopy)	8840	4.44
Exotic grasslands	33613	16.87
Indigenous forest	80747	40.53
Orchard and cropland	968	0.49
Scrub	16743	8.40
Tussock grassland and alpine herb fields	11309	5.68
Water bodies	220	0.11
	199212	100.00

Land cover class 2001	Area hectares	Area %
Bare ground	11460	5.75
Built up area	2	0.00
Exotic forest (open canopy)	13385	6.72
Exotic forest (closed canopy)	31902	16.01
Exotic grasslands	32626	16.38
Indigenous forest	80642	40.48
Orchard and cropland	976	0.49
Scrub	16669	8.37
Tussock grassland and alpine herb fields	11309	5.68
Water bodies	220	0.11
	199212	100.00

Vegetation class 1996	Vegetation class 2001	Area hectares	% Change
Exotic grasslands	Exotic forest (open canopy)	1064	0.53
Exotic grasslands	Orchard and cropland	8	0.00
Exotic grasslands	Scrub	2	0.00
Scrub	Exotic grasslands	69	0.03
Scrub	Exotic forest (open canopy)	40	0.02
Indigenous forest	Exotic grasslands	12	0.01
Indigenous forest	Exotic forest (open canopy)	72	0.04
Indigenous forest	Bare ground	21	0.01
Bare ground	Scrub	33	0.02
Bare ground	Exotic grasslands	5	0.00
Bare ground	Exotic forest (open canopy)	4001	2.01
Exotic forest (open canopy)	Exotic forest (closed canopy)	568	0.29
Exotic forest (closed canopy)	Bare ground	9091	4.56
Unchanged	Unchanged	184224	92.48