



Integrated Catchment Management: The value of building partnerships with indigenous groups

ICM-AGM Nelson, November 2005

Garth Harmsworth

(Te Arawa, Ngāti Tūwharetoa, Ngāti Raukawa)

Landcare Research, Private Bag 11-052, Palmerston North

HarmsworthG@LandcareResearch.co.nz



**Manaaki Whenua
Landcare Research**



Manaaki Whenua
Landcare Research

Te Awhina Marae



MAKING A DIFFERENCE FOR A TRULY CLEAN, GREEN NEW ZEALAND

Integrated Catchment Management, Motueka

- Building the relationship, trust, respect
- Issues analysis
- Working in with the lives and issues of indigenous groups (Māori) – rather than fitting them into a research agenda
- Alignment between Māori issues and ICM research, identifying research needs
- Participation, developing collaborative projects
- Learning together, working together, sharing info.
- Integrated knowledge forms and systems
- Environmental – cultural projects
- Improved decision-making – desired goals for sustainability



Manaaki Whenua
Landcare Research

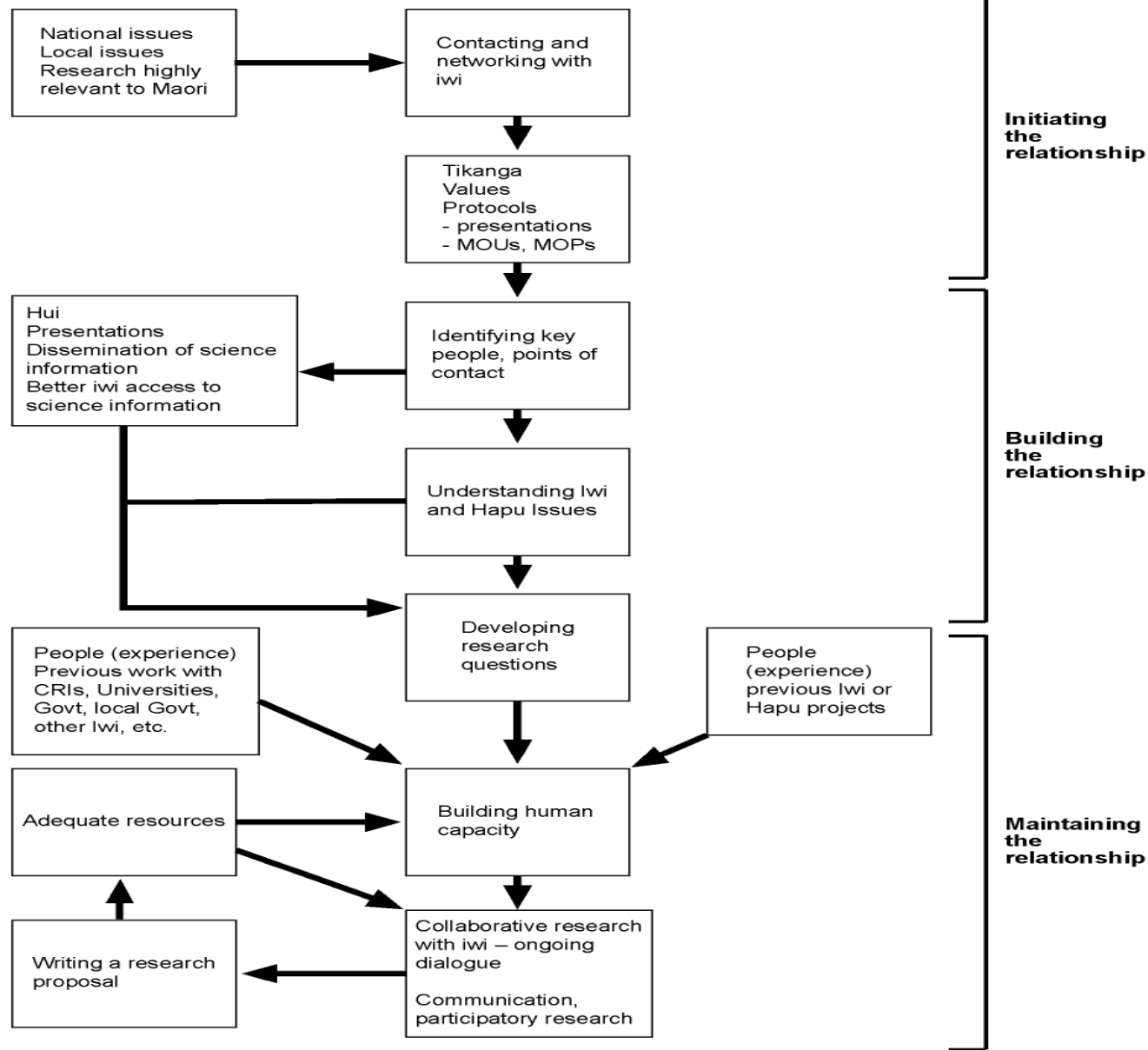


Figure 1: The key steps to developing collaborative research with iwi

Collaborative projects, partnerships

- Creating a learning environment, based on respect, trust and goodwill
- Development in ICM of generic collaborative guidelines, best practice (e.g., based on reflection)
- Opportunities for collaborative, joint projects with indigenous groups e.g., iwi and hapu
- Links to social, economic, and biophysical projects
- Indigenous knowledge research – adding the cultural dimension to ICM
- Building capacity (e.g. empowerment, resources)
- Understanding integrated systems for knowledge management to improve decision-making
- Tools, methods, approaches, lessons for working in other catchments
- Projects and actions



Manaaki Whenua
Landcare Research

Iwi led Puketawai restoration project



MAKING A DIFFERENCE FOR A TRULY CLEAN, GREEN NEW ZEALAND



Manaaki Whenua
Landcare Research

Cultural-environmental projects



MAKING A DIFFERENCE FOR A TRULY CLEAN, GREEN NEW ZEALAND

Māori knowledge and information systems

The GIS project, Motueka

- Spatial database and mapping model for recording cultural heritage, Māori values, and taonga
- Complementary to existing Māori knowledge systems and science knowledge
- Recording cultural histories and values
- Accessing science and technical information
- Taking into account intellectual property rights, confidentiality and sensitivity of information
- Helping decision-making, goals for sustainability
- Building capacity for indigenous groups
- Promotes collaboration





Manaaki Whenua
Landcare Research

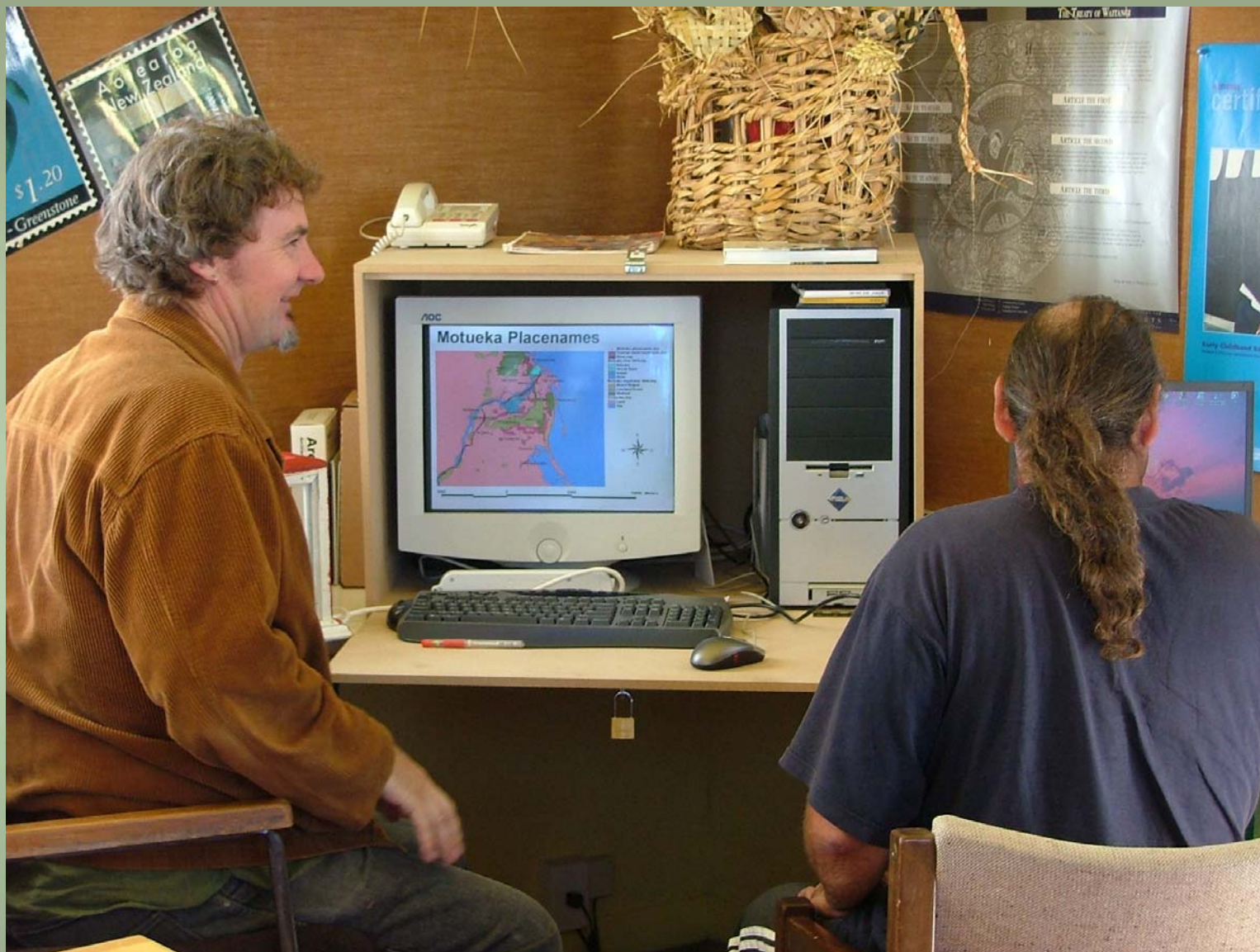
GIS hui/workshop 2005



MAKING A DIFFERENCE FOR A TRULY CLEAN, GREEN NEW ZEALAND



Manaaki Whenua
Landcare Research



MAKING A DIFFERENCE FOR A TRULY CLEAN, GREEN NEW ZEALAND

Lessons, tools and approaches for other catchments





Manaaki Whenua
Landcare Research

Working together – promoting partnerships, collaborative learning, research with tangata whenua

- Conceptual models and frameworks for collaborative research, learning, participation, collaborative research guidelines
- Responsive ICM research – alignment to tangata whenua issues, increased iwi access to ICM science and research information
- Understanding, respecting, utilising cultural knowledge
- Best practice guidelines for building partnerships between tangata whenua – local government – stakeholders, researchers, and the community
- Increase tangata whenua participation in research and science
- Increase tangata whenua participation in planning and policy
- ICM research contributes to iwi activities/projects/research and improves decision-making
- Joint projects – to achieve agreed regional/community goals, community development, and ultimately sustainable development



Manaaki Whenua
Landcare Research

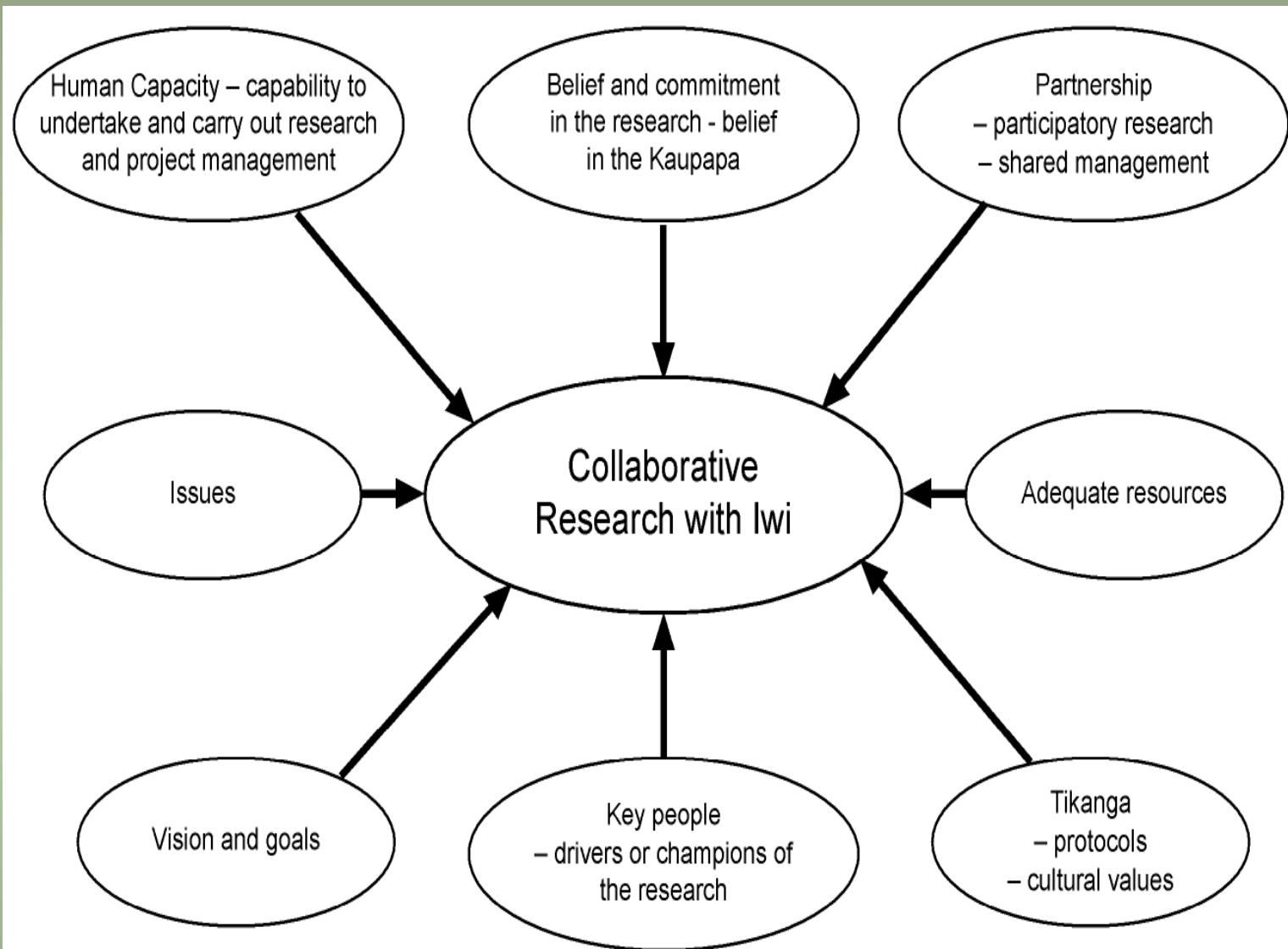


Figure 3: Making the 'collaborative research model' work: The key ingredients