



# **Integrated Catchment Management: iwi/hapu values and collaboration**

**ICM-AGM Nelson, November 2004**

**Garth Harmsworth**

**(Te Arawa, Ngāti Tūwharetoa, Ngāti Raukawa)**

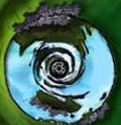
**Landcare Research, Private Bag 11-052, Palmerston North**

**HarmsworthG@LandcareResearch.co.nz**





Manaaki Whenua  
Landcare Research



MAKING A DIFFERENCE FOR A TRULY CLEAN, GREEN NEW ZEALAND



Manaaki Whenua  
Landcare Research

## Iwi values and collaboration

Progress:

Te Tau Ihu O Te Waka a Maui

Motueka – 3 years – building relationships, models/frameworks for collaborative learning, reflection, collaborative research with tangata whenua, Maori organisations (MIRMAK)

3 main iwi: Ngāti Rarua, Te Atiawa, Ngāti Tama

The work:

- **Creating a learning environment based on respect, trust, and goodwill**
- **Identifying iwi and hapu issues**
- **Opportunities for joint research and linkages to ICM research**
- **Frameworks and models for collaborative learning and reflection**
- **Collaborative guidelines**
- **Links to other ICM social learning**
- **Links to biophysical science**
- **Identifying capacity needs**
- **Indigenous knowledge research /environmental monitoring**
- **Understanding knowledge management systems (cultural-social-environmental) – decision-making**
- **Collaborative projects with iwi/hapu groups**

# Contracted milestones and outputs 2003-2005

- Papers (2) – Collaborative research with iwi and hapu as part of ICM in NZ, web site paper and refereed journal (June 2005)
- Paper – Maori environmental monitoring for journal –with Gail Tipa (June 2005)
- Web – Collaborative guidelines and checklist (June 2004)
- Presentations and article on iwi/hapu/ICM participatory research (Hui, Discovery, AGM)
- Add to, update, contribute to ICM web site
- Report – Good practice guidelines for iwi/hapu/local government relationships (for web site June 2005)
- Manage ICM sub-contract: tangata whenua information systems (progress reports –June 2005)

# Iwi project (sub-contract)

## Tangata whenua information systems

(Commenced October 2003)

### Progress:

Project team est., No. hui held, data/information agencies contacted, work plan and strategy developed, GIS discussion paper circulated, hardware, software, and data requirements investigated and reported

### Purpose:

- **Iwi knowledge and management system**
- **Repository for cultural (matauranga) and environmental knowledge**
- **A Geographic Information System will be central**
- **Support iwi activities, e.g. cultural monitoring, environmental monitoring, cultural impact assessment, resource consents**
- **To improve decision-making**
- **Underpin cultural–environmental projects**
- **Facilitate links with ICM science projects**
- **Links with community and local government projects**
- **Networks, internet, intranet, www**



Manaaki Whenua  
Landcare Research

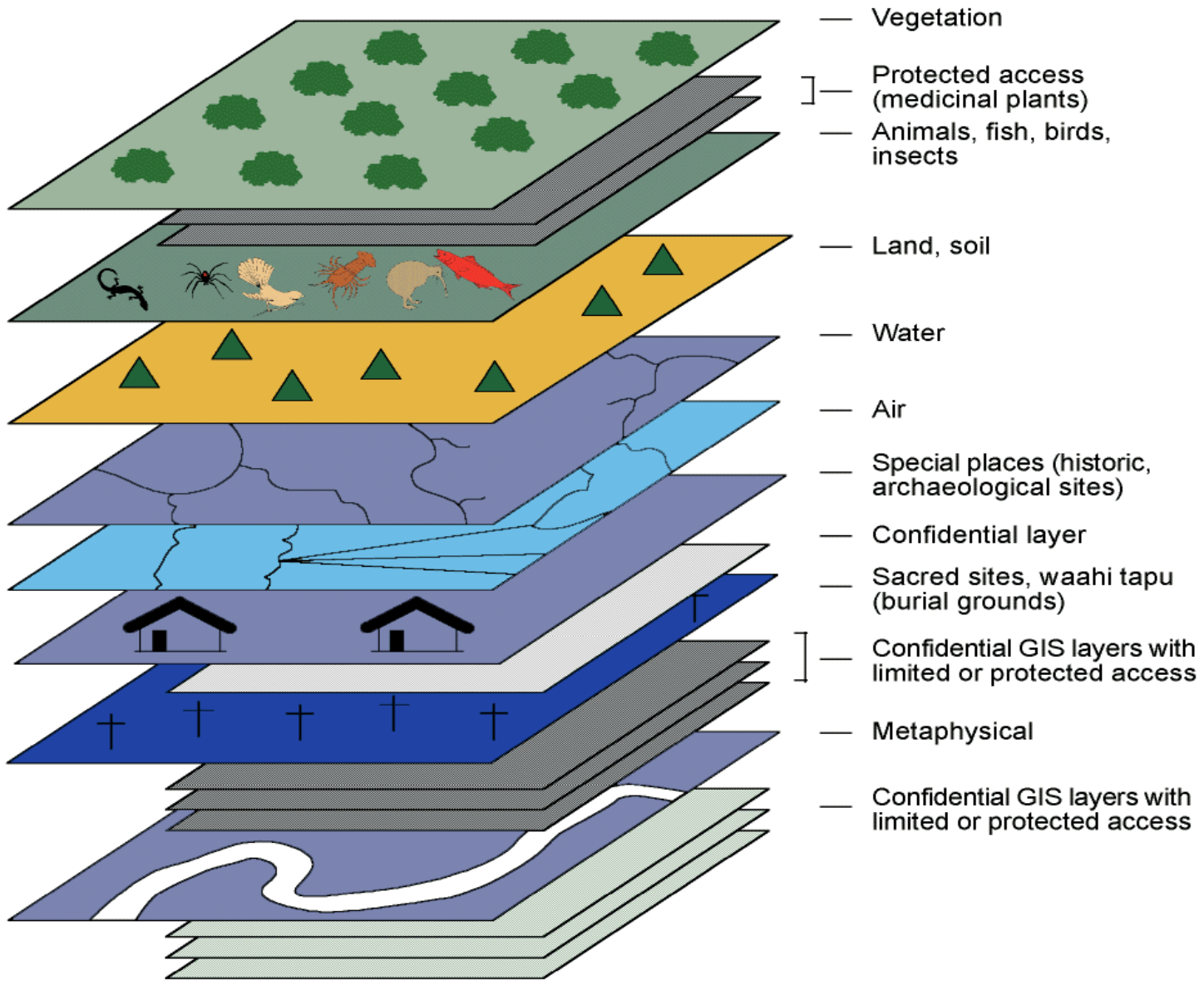


Figure 1: GIS layers and confidential sub-layers

# Working together –promoting partnerships, collaborative learning, research with tangata whenua

- ICM research that contributes to iwi activities/projects/research and improves decision-making
- Collaborative management approaches, management systems, with tangata whenua
- Conceptual models and frameworks for collaborative research, learning, participation, collaborative research guidelines
- Responsive ICM research – alignment to tangata whenua issues, increased iwi access to ICM science and research information
- Understanding, respecting, utilising cultural knowledge
- Good practice guidelines for building partnerships between tangata whenua – local government – stakeholders, researchers, and the community
- Joint projects – to achieve agreed regional/community goals, community development, and ultimately sustainable development



Manaaki Whenua  
Landcare Research

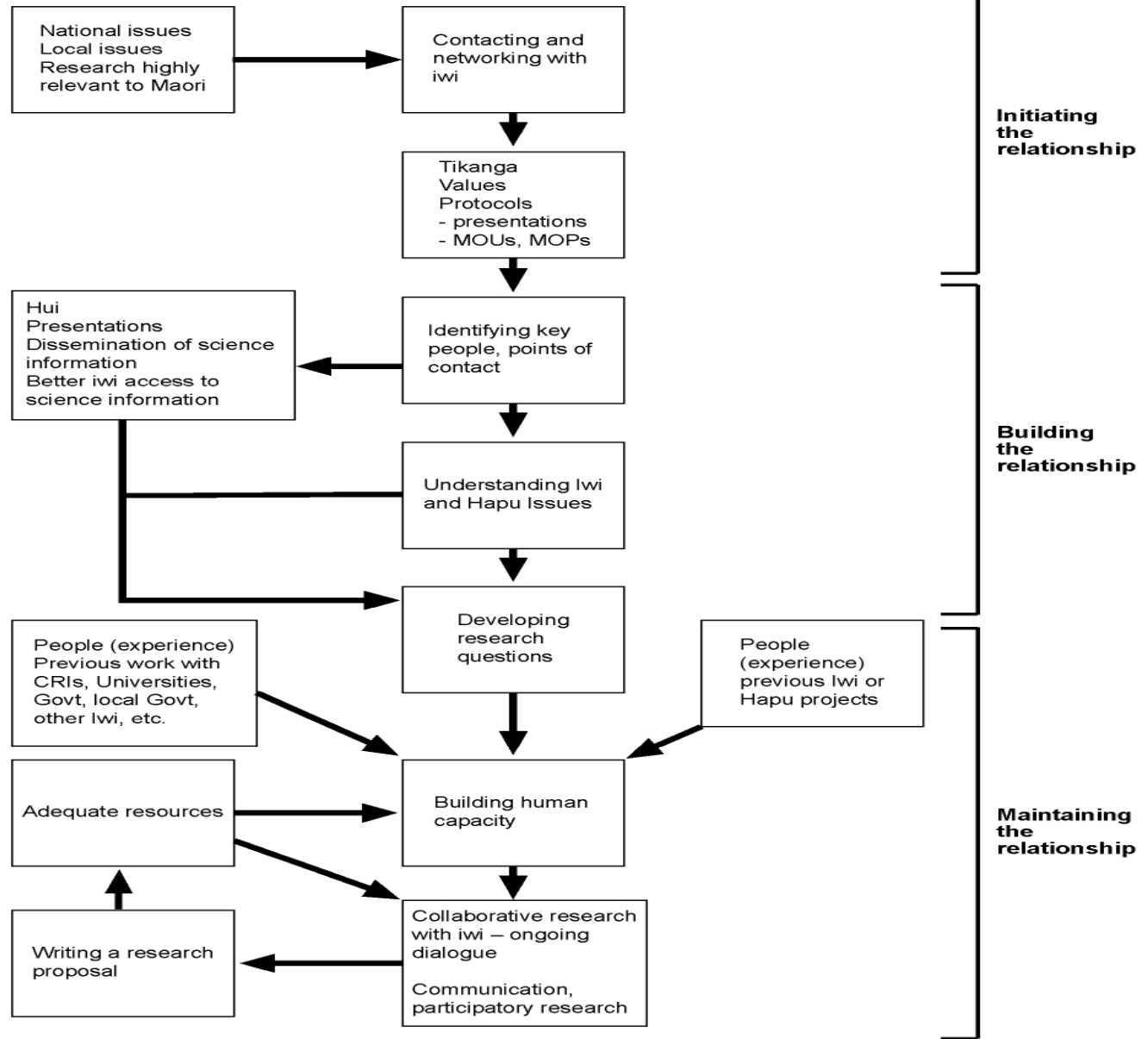


Figure 1: The key steps to developing collaborative research with iwi





Manaaki Whenua  
Landcare Research

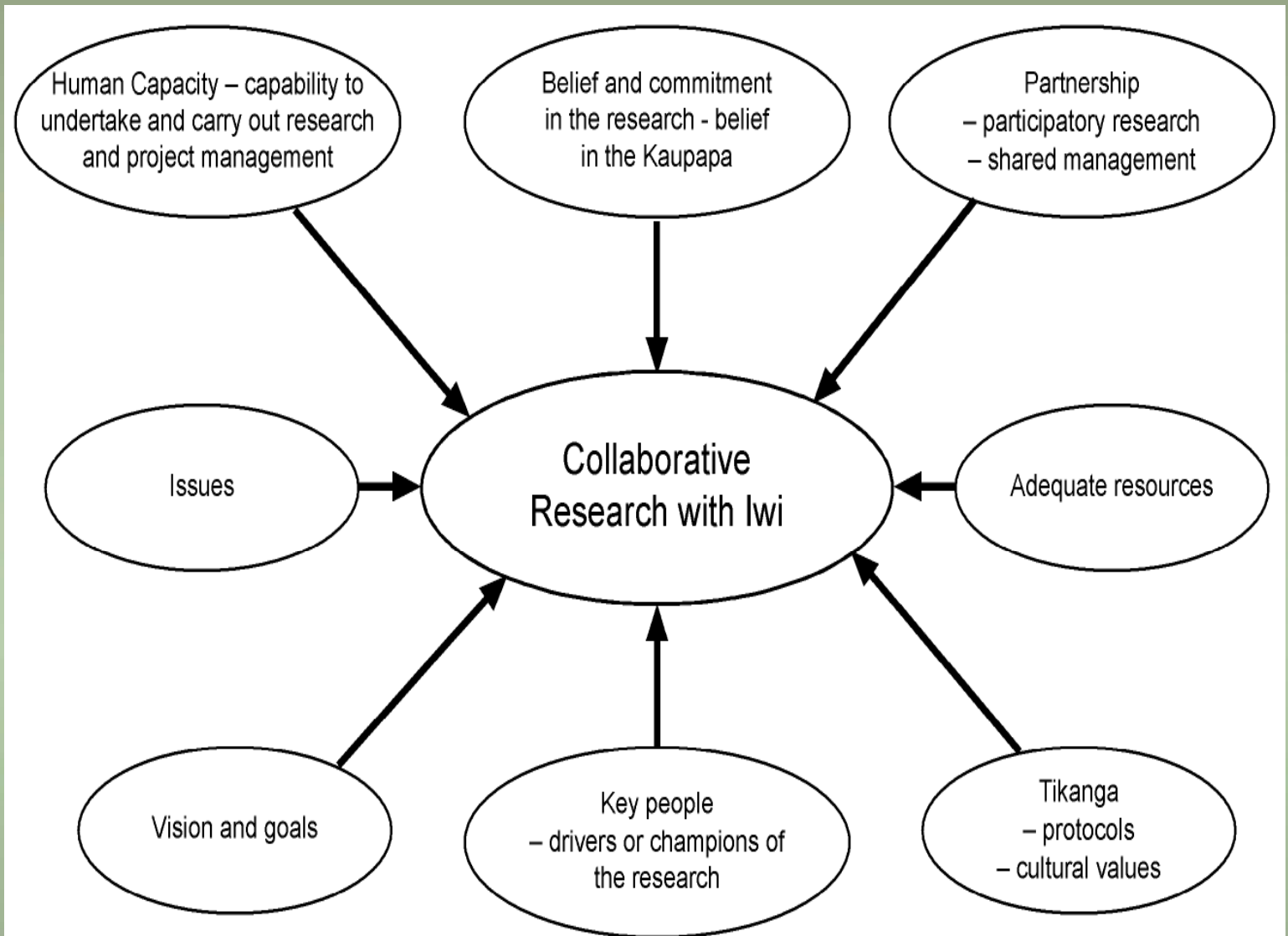


Figure 3: Making the 'collaborative research model' work: The key ingredients