

Learning about integration

Lessons from ICM – Will Allen & Chris Phillips

Recap on today – Andrew Fenemor

Stories from ICM – Margaret Kilvington

Synthesis & Future – Gene Likens



"from ridge tops to the sea"

Integrated Catchment Management

Paddling the waka – Lessons from ICM



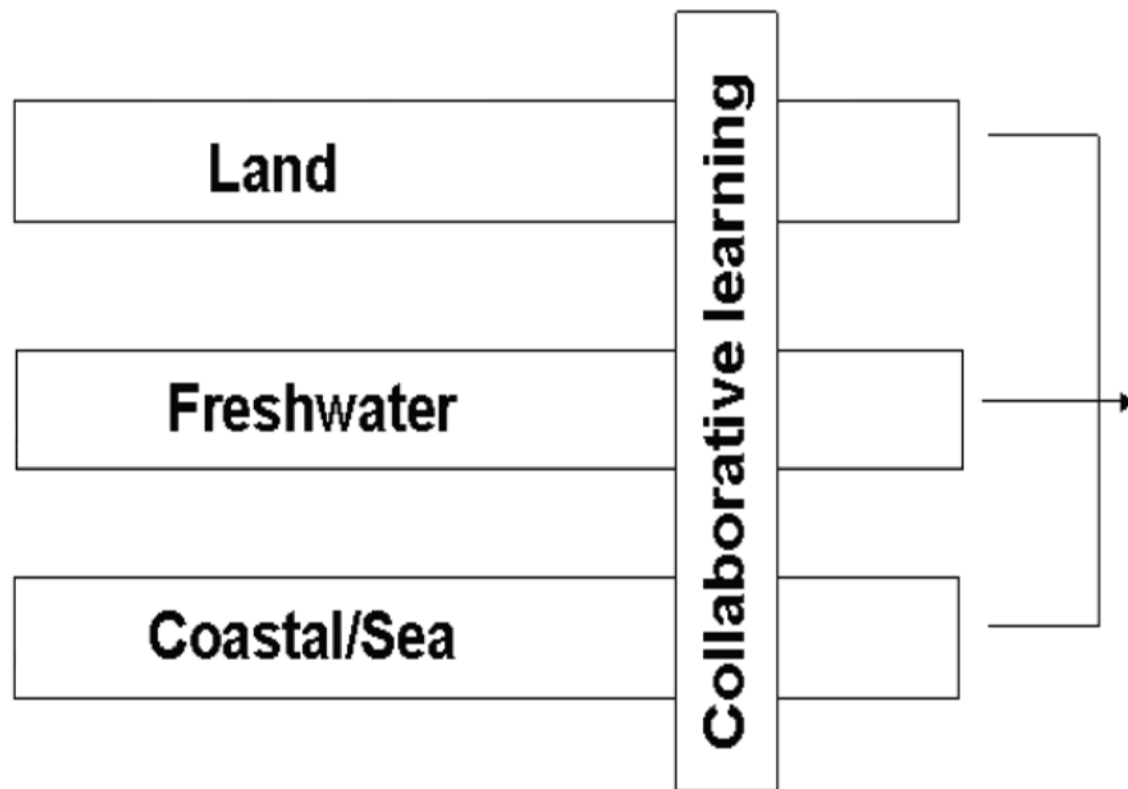
Will Allen & Chris Phillips
acknowledging the whole ICM team

in this talk

- Engagement and learning - our research highlights
- Practicing what we preach - our 7 Lessons



Integrating through engagement and learning



Social frameworks

- Help map and design social processes





ICM-Motueka social frameworks

- ICM-Motueka process cycle
- ISKM (Integrated Systems for Knowledge Management)
- Social Spaces
- Orders of outcomes
- Ways of working with iwi

Social platforms

- Going beyond traditional “meetings”
- Help people share ideas and create solutions



ICM-Motueka social platforms

- *Travelling River*
- *Watershed Talk*
- Community Reference Group
- Sediment learning group
- AGMs
- Hui
- *Confluens* online discussion

7 key Lessons from ICM Motueka



1 – Clarify the goal & work with key people



2 – Manage expectations



3 – Agree on integrative concepts



4 – Leadership



5 – Communication with trust & respect



6 – Different learning means different knowledge products



7 – Measure & celebrate success

These are directly transferable to all projects

Source: Phillips, Allen, Fenemor, Bowden, Young (in press). Integrated catchment management research: Lessons for interdisciplinary science from the Motueka Catchment, New Zealand . Marine & Freshwater Research



Lesson 1:

Clarify the goal & work with key people

Goal: undertake research to help improve the management of land, freshwater, and near-coastal environments in catchments with multiple, interacting, and potentially conflicting land and water uses.

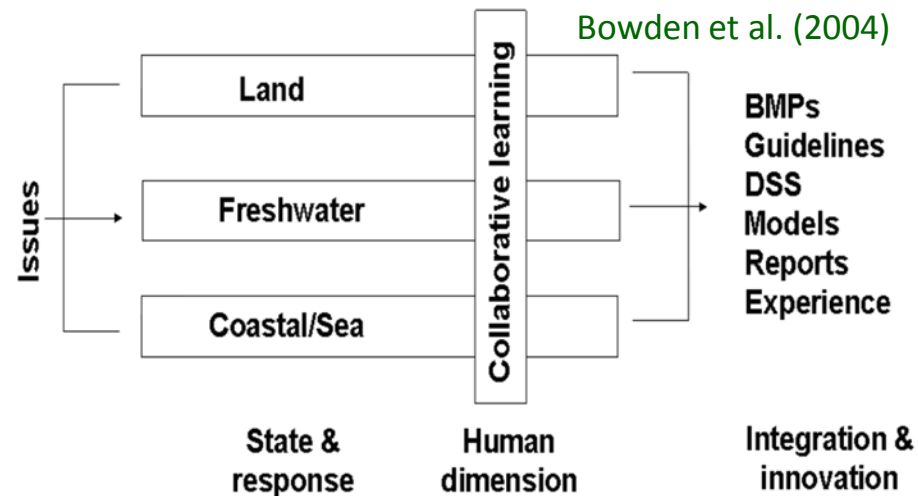
Lesson 2: Manage expectations

- Internally
- Externally
- Need time
- Keep bigger goal in mind

Lesson 3: Agree on integrative concepts



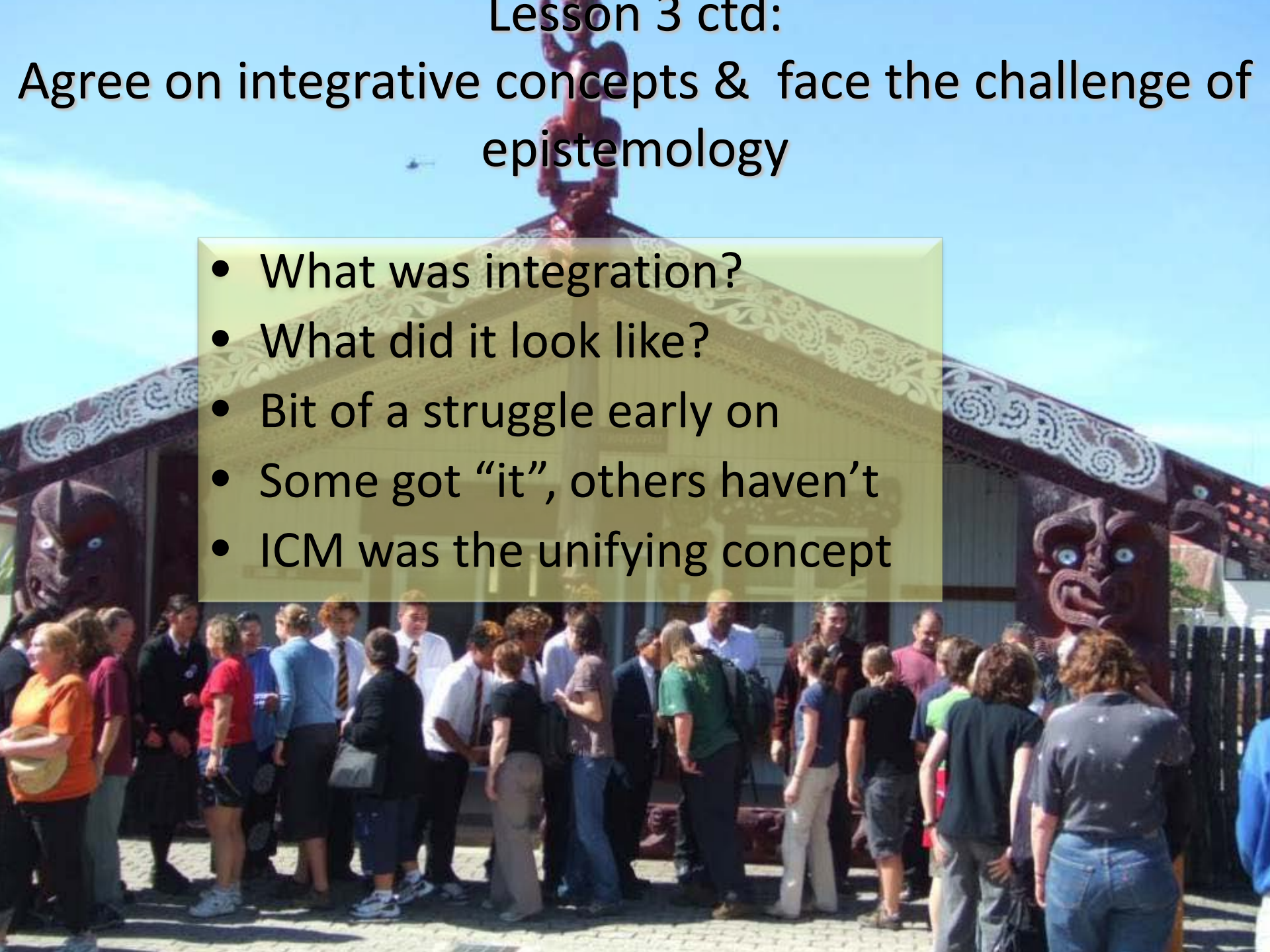
- Make integration part of the project
- Start integration at the beginning
- Plan an integrated project
- Multiple levels of interaction



Lesson 3 ctd:

Agree on integrative concepts & face the challenge of epistemology

- What was integration?
- What did it look like?
- Bit of a struggle early on
- Some got “it”, others haven’t
- ICM was the unifying concept



Lesson 4:


Good leadership & management

- 2 leaders – 2 styles
- End user partner became leader
- Both did some science
- Maintaining the momentum



Lesson 5:

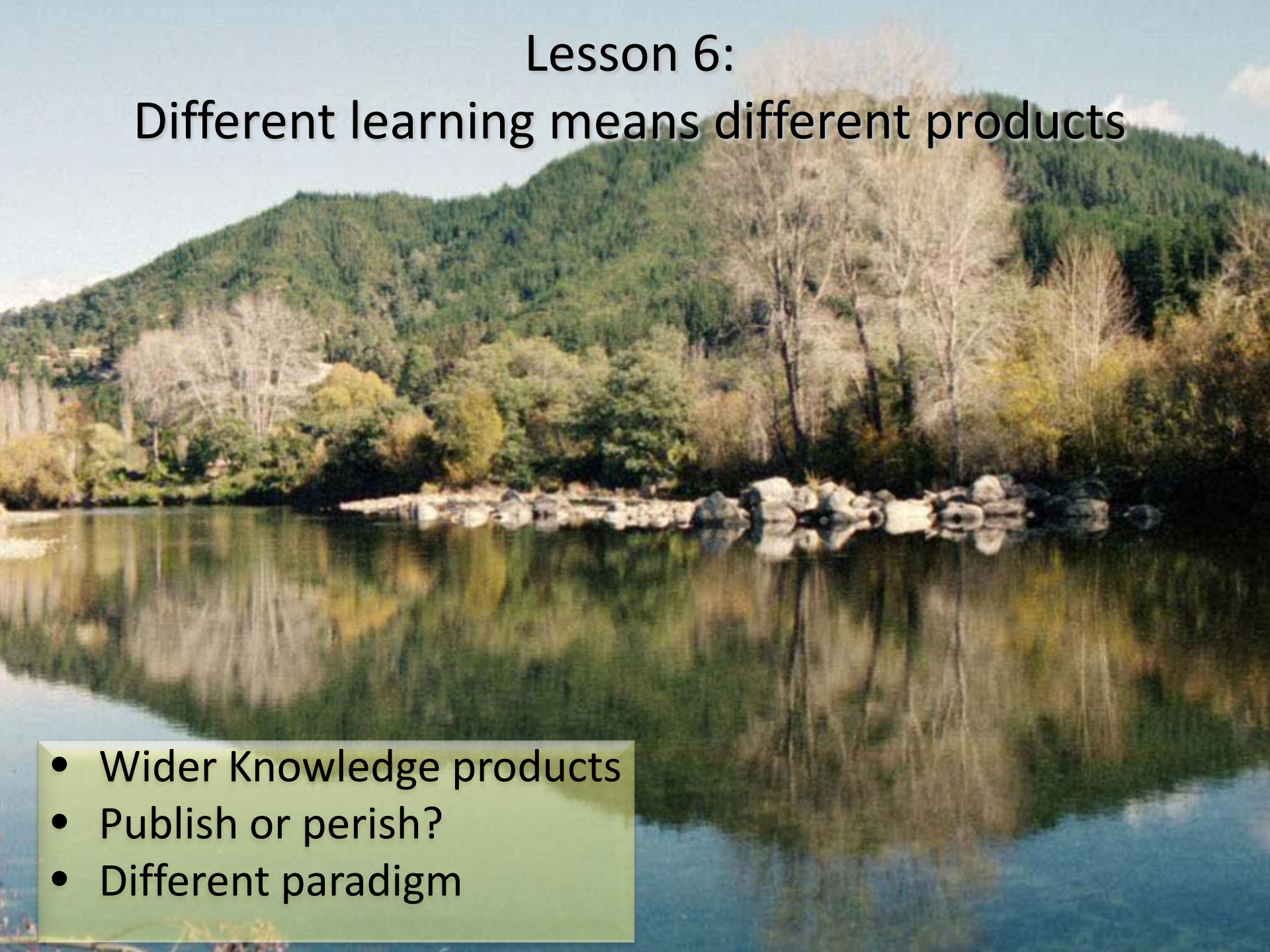
Communication with trust & respect

A photograph of a sunset over the ocean. The sky is filled with vibrant orange and yellow clouds, with the sun low on the horizon. The ocean is dark and calm, reflecting the colors of the sky. In the foreground, a dark, silhouetted coastline with some vegetation is visible on the left side.

Mutual trust, understanding and respect are pre-conditions for integrative and collaborative work.

Lesson 6:

Different learning means different products

- 
- Wider Knowledge products
 - Publish or perish?
 - Different paradigm

Lesson 7:

Measure & celebrate success


- Evaluation & reporting
- Different metrics, e.g. capacity building
- Relationships

Integration = up the creek with a paddle!



"Scientists cannot afford to remain detached experts who deliver knowledge to managers, but must assume the roles of collaborative learners and knowledge generators in a science-management partnership"

Roux et al. (2006)



"The real voyage of discovery consists not in seeking new landscapes, but in having new eyes".

- Marcel Proust



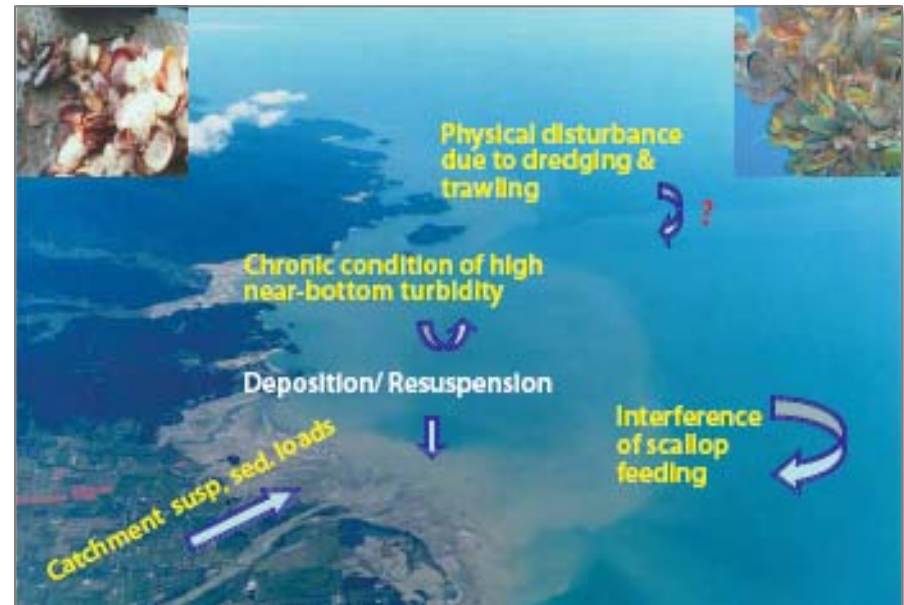
"from ridge tops to the sea"

Integrated Catchment Management

Recap on today

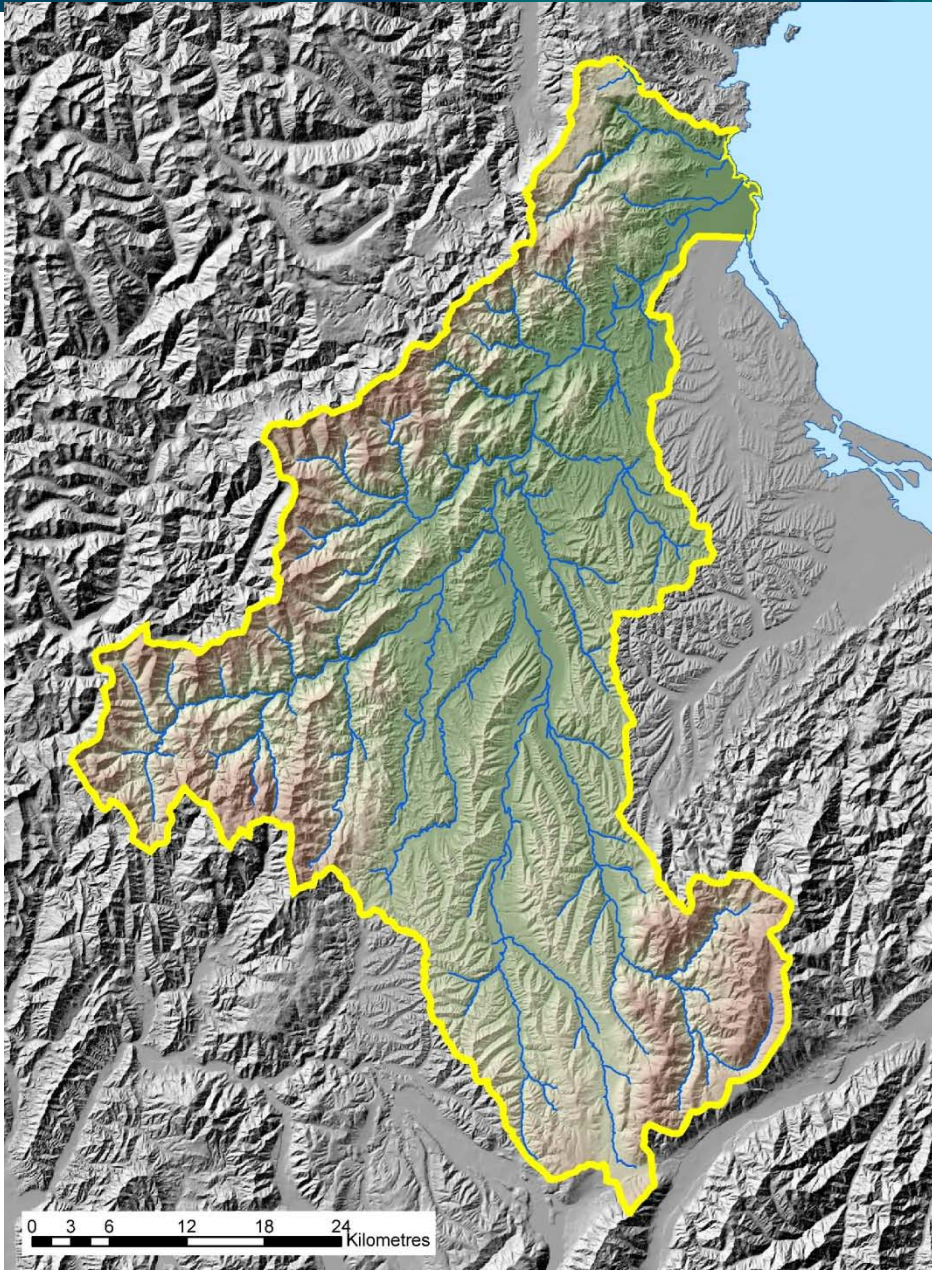
Andrew Fenemor

"ridge tops to the sea"



"from ridge tops to the sea"

Integrated Catchment Management



- Recap on how we've addressed the 5 BIG research questions common across all NZ catchments
- Involving children in ICM – announcing results of ICM schools competition sponsored by Landcare Research & Cawthron Institute



A Hover of Trout

*Wall hanging by
Ngatimoti School Room 4*

A hover of Trout was heard to say -
"Wow, this looks like a healthy river to swim in and
"stay!"



Motueka River

Irene Post

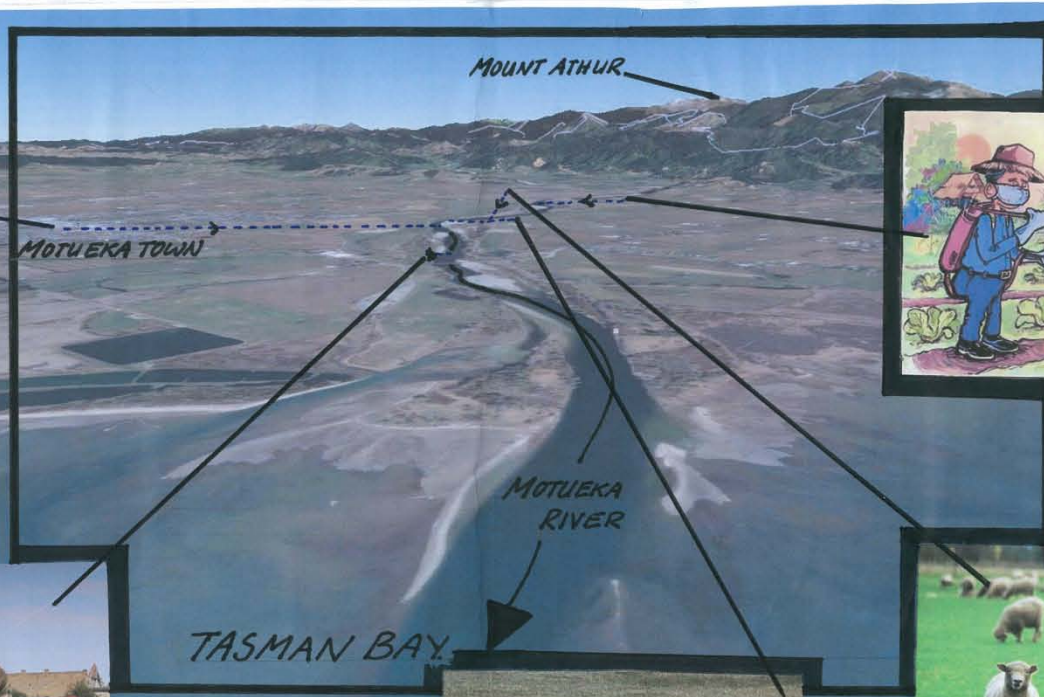
Ngatimoti School

ENVIRONMENT THE ENVIRONMENT

MOTUEKA RIVER CATCHMENT



TOILET WASTE FROM THE MOTUEKA TOWNSHIP AND OTHER SMALL COMMUNITIES.



SPRAYING FRUIT AND VEGETABLE PLANTATIONS by THE MOTUEKA RIVER.



CONSTRUCTION AND BUILDING SITES by THE MOTUEKA RIVER.

FARMING CATTLE by THE MOTUEKA RIVER

ALL THESE THING HAVE FOUND THEIR WAY INTO THE RIVER + OTHER WATER WAYS IN DIFFERENT PARTS ALONG THE MOTUEKA RIVER. COWS + SHEEP ARE NOW BEING FARMED REALLY CLOSE TO THE RIVER WHICH RESULTS IN ANIMAL DUNG IN THE RIVER.

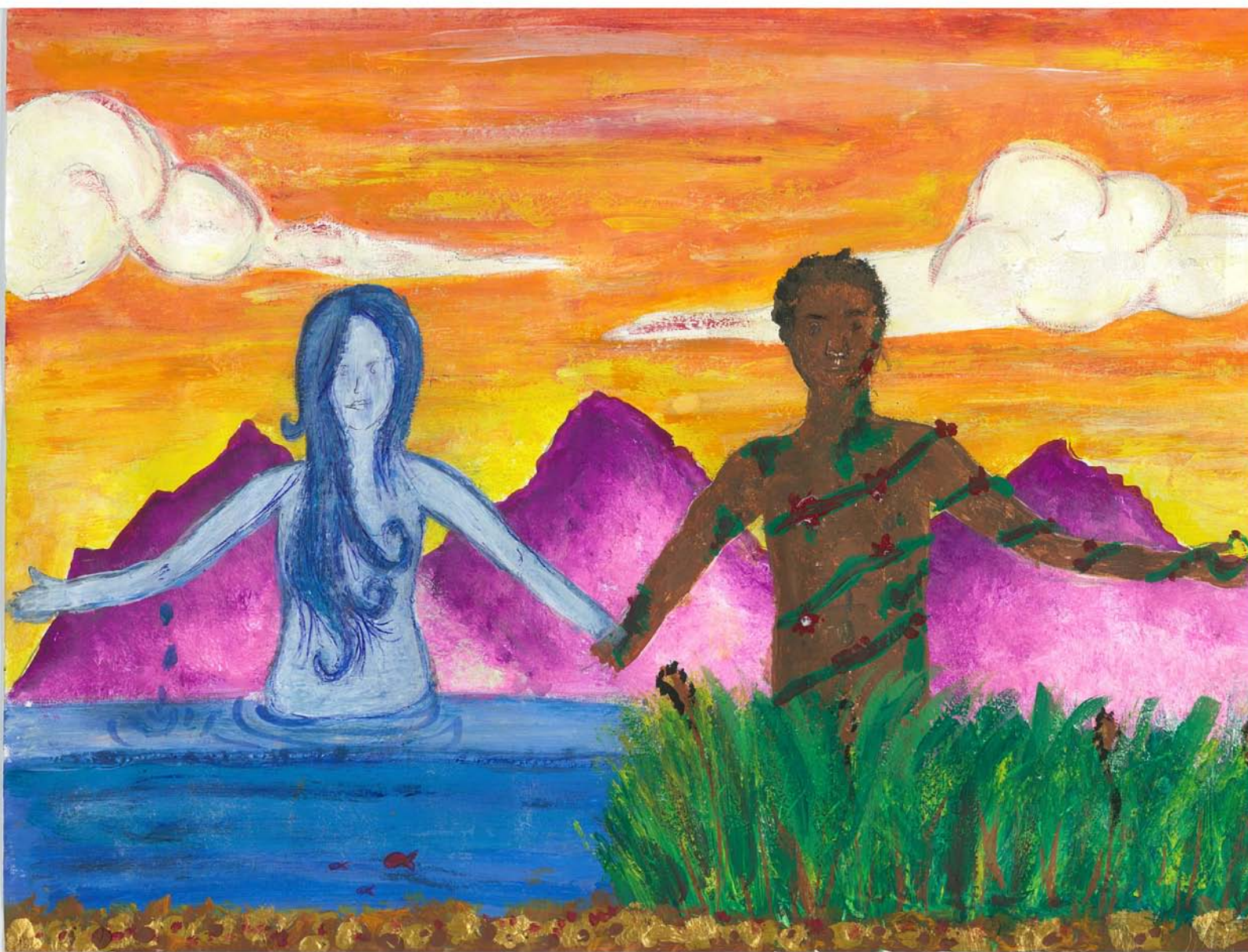


FARMING SHEEP by THE MOTUEKA RIVER

Motueka River catchment

Lisa Podlucky

Motueka High School



All as One

Tegan Lamont

Motueka High School



"from ridge tops to the sea"

Integrated Catchment Management

Stories from ICM

Margaret Kilvington
and others





"from ridge tops to the sea"

Integrated Catchment Management

Synthesis

Dr Gene Likens

Cary Institute for Ecosystem Studies

