

Dialogue Processes to promote
effective engagement across layers
and players

Margaret Kilvington & Maggie Atkinson

Watershed Talk

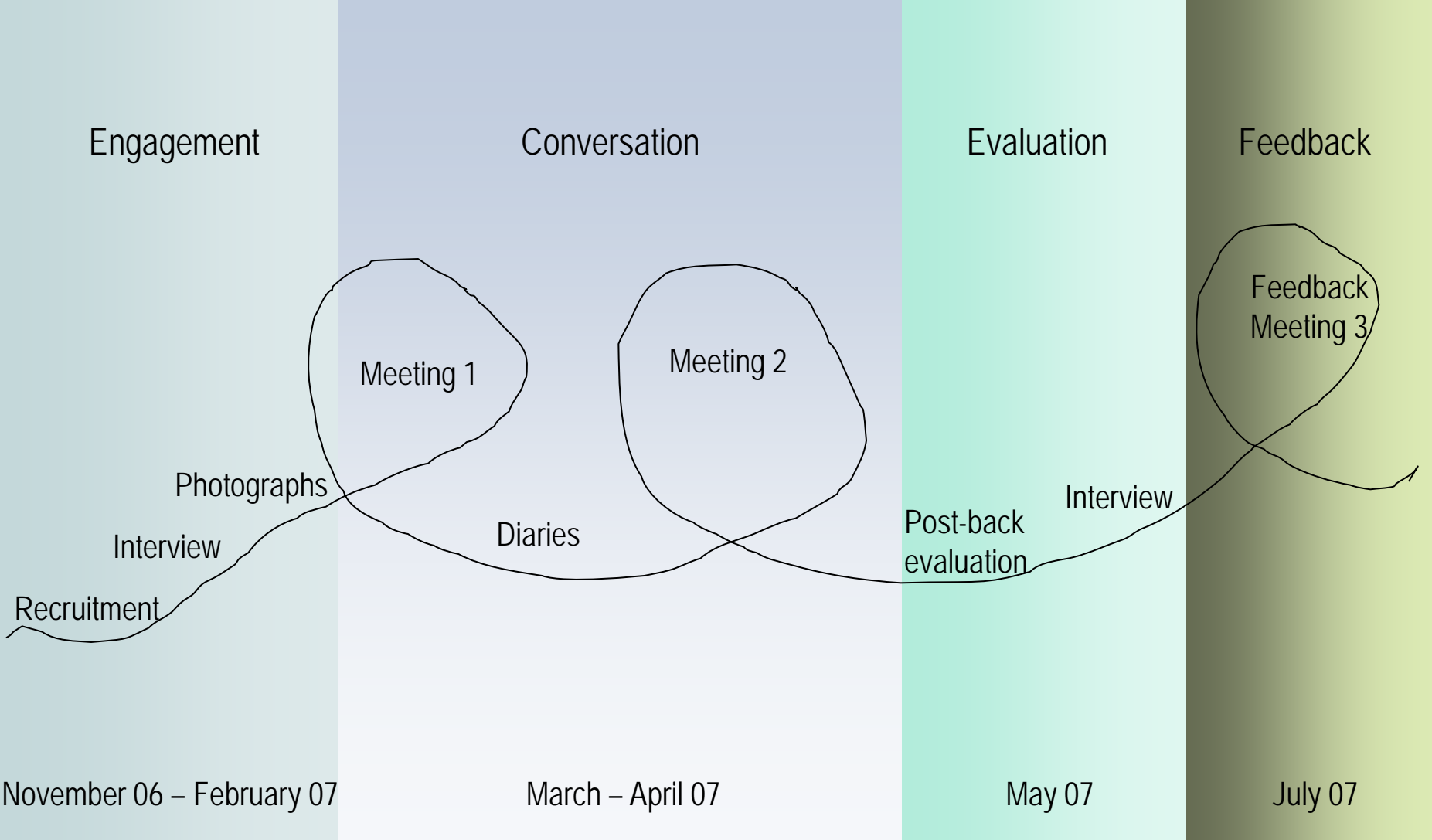
The cultivation of Ideas and action



A project about processes for building community resilience

Maggie Atkinson Margaret Kilvington Andrew Fenemor

Phases and events of Watershed Talk



Watershed Talk

Four themes

- Principle based design
- Reflective practice
- Innovative techniques
- Anchor points

Watershed Talk

Principle based design

- Watershed Talk principles:

respect, diversity, empowerment, reflection, generosity, and active cultivation

Well rehearsed in settings of community development, dialogue, conflict management and participatory action research

- Contrast with recipe book approach
- Articulate the principles you already work with & think about the ones you might want to work with

Watershed Talk

Principle based design

respect, diversity, empowerment, reflection,
generosity, and active cultivation

- **Scarcity** and ‘resource management speak’ go hand in hand

“Generosity – it is actually so easy to do something that will change the whole tenor of an interaction or situation” Watershed Talk participant

Watershed Talk

Reflective practice

- *What are we going to do? How will we do it? How is it working? What is happening? What could we do differently...and how are **WE** learning and changing?*
- As important for working with standard format (recipes) as it is for working with principles
- Not difficult but important to be active about it
- In Watershed Talk – had informal and formal reflective elements: e.g. interviews, evaluations & conversations in project team

Watershed Talk

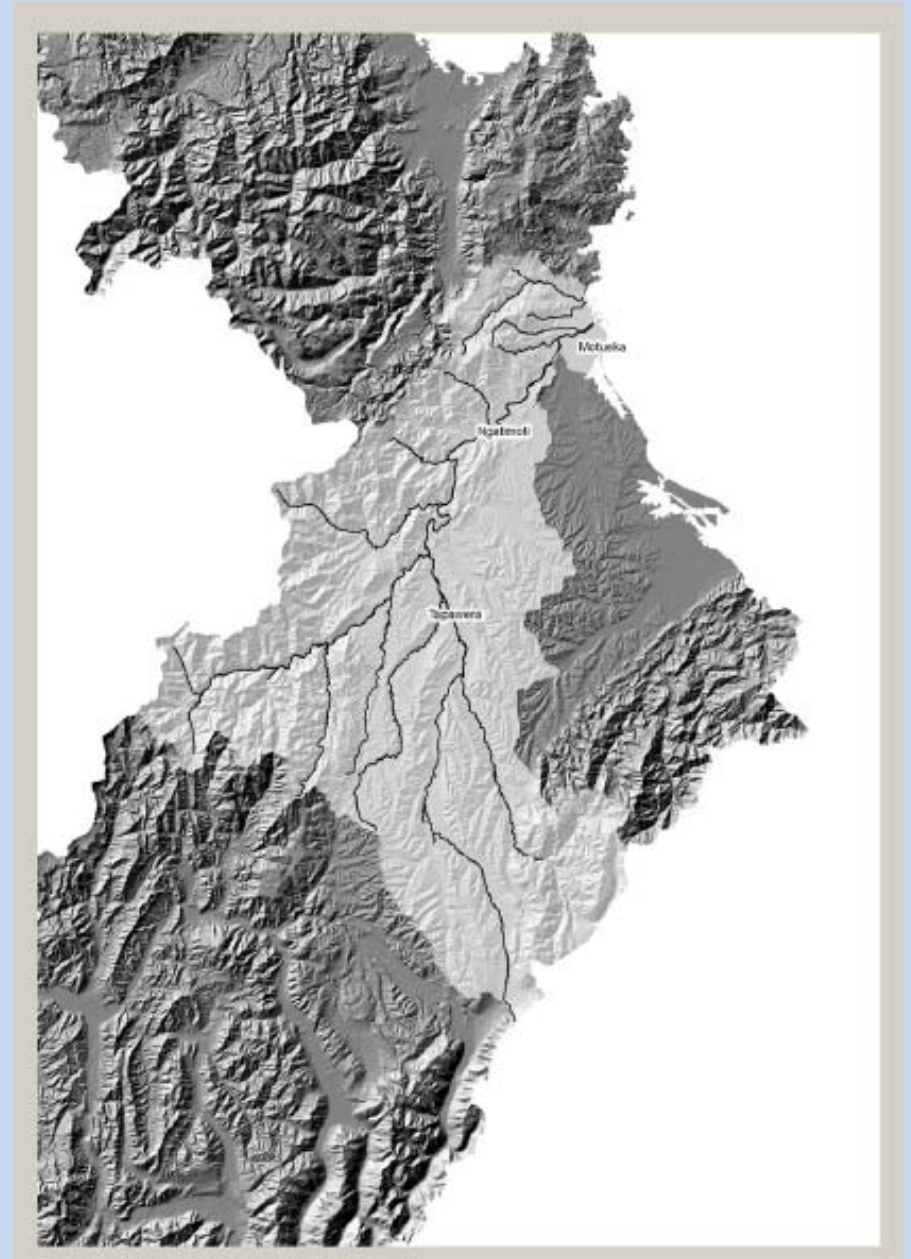
Innovative techniques

- Ideas can come from anyone and anywhere. Having principles you are working to and reflective practice helps you chose the ones right for you
- Three ideas we used in Watershed Talk:
 - Icebreaker map exercise
 - Photography
 - Camping out

Three ideas we used in
Watershed Talk:

**Icebreaker map
exercise**

- *Building connection*
- *Common sense(Mihi)*
- *Empowering*



Mark Newcombe



Sharon Rogers



Jason Garland



Innocent McCarthy



Roger Young



Rob Smith



Roger May



Brent Hodgkinson



Christine MacLean



ChF Pell



Les Barber



Roger May



Mawana Ta'ao



Scuba Hoelzle



Mark Newcombe



Brent Hodgkinson



Scuba Hoelzle



Les Barber



Steve Mathers (TDC)



Christine MacLean



Roger Young



Three ideas we used in Watershed Talk: **Photography**

- *Reflective tool*
- *Build self efficacy*
- *Empowering*
- *Connecting*

Watershed Talk

- Three ideas we used in Watershed Talk:
 - **Camping out**
- *Adam Kahane: allowing people to come to place of resolution*
- *Not for everyone – but maybe more opportunities to use this then we think?*

Watershed Talk

Anchor points

- At times this engagement business can feel very risky.
Anchor points – way to keep yourself grounded & supported
- Can be **support of good team**
- Can be support of **good practice**
- Can be grounding in **principles**
- Can be local connection (**champion**) – or knowing have backing within your organisation (**sponsor**)

Maryanne Tolson



Roger May



Jean Gelfand



Mark Newcombe



Peter Young



Sue Robb



Zoe Fry Robinson



**Manaaki
Whenua
PRESS**