



Manaaki Whenua  
Landcare Research

# Can we model futures scenarios for catchment management?



MAKING A DIFFERENCE FOR A TRULY CLEAN, GREEN NEW ZEALAND



Manaaki Whenua  
Landcare Research

# Can we model futures scenarios for catchment management? -IDEAS?



# IDEAS

- Integrated
- Dynamic
- Environmental
- Assessment
- System

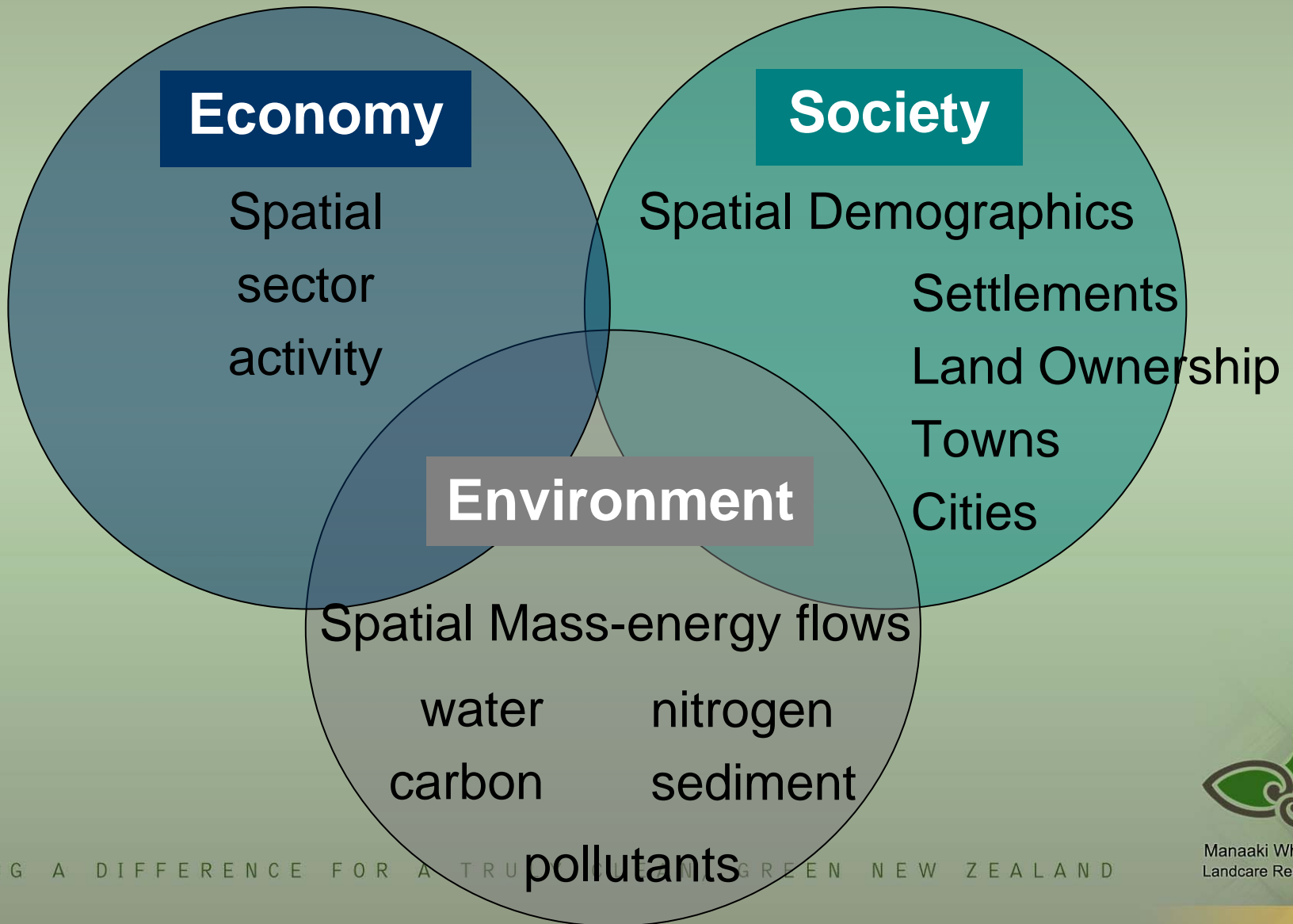


# Required attributes

- Triple bottom-line approach
- Collaborative learning process
- Assessment of future catchment scenarios
- Dynamic



# Triple bottom-line approach

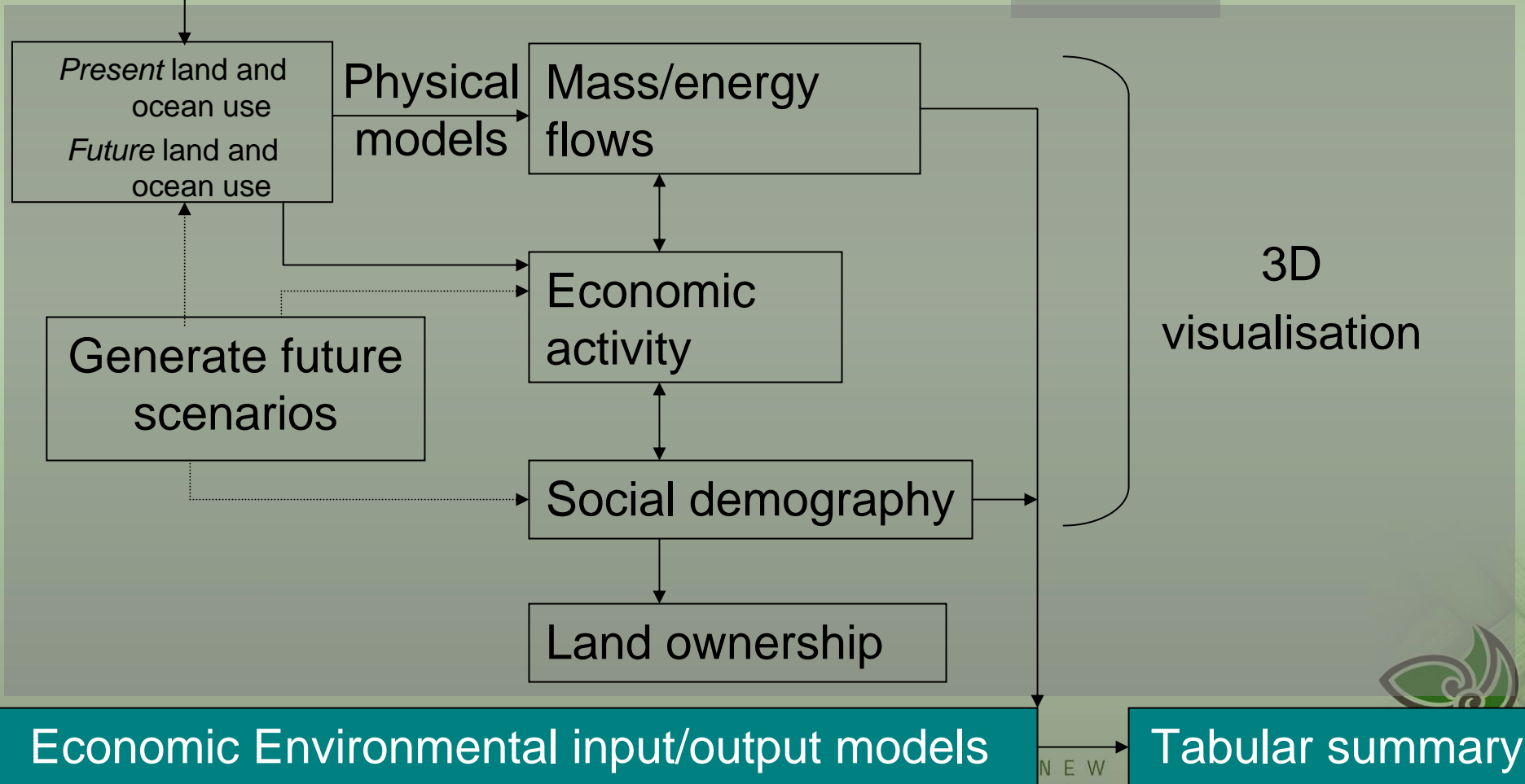


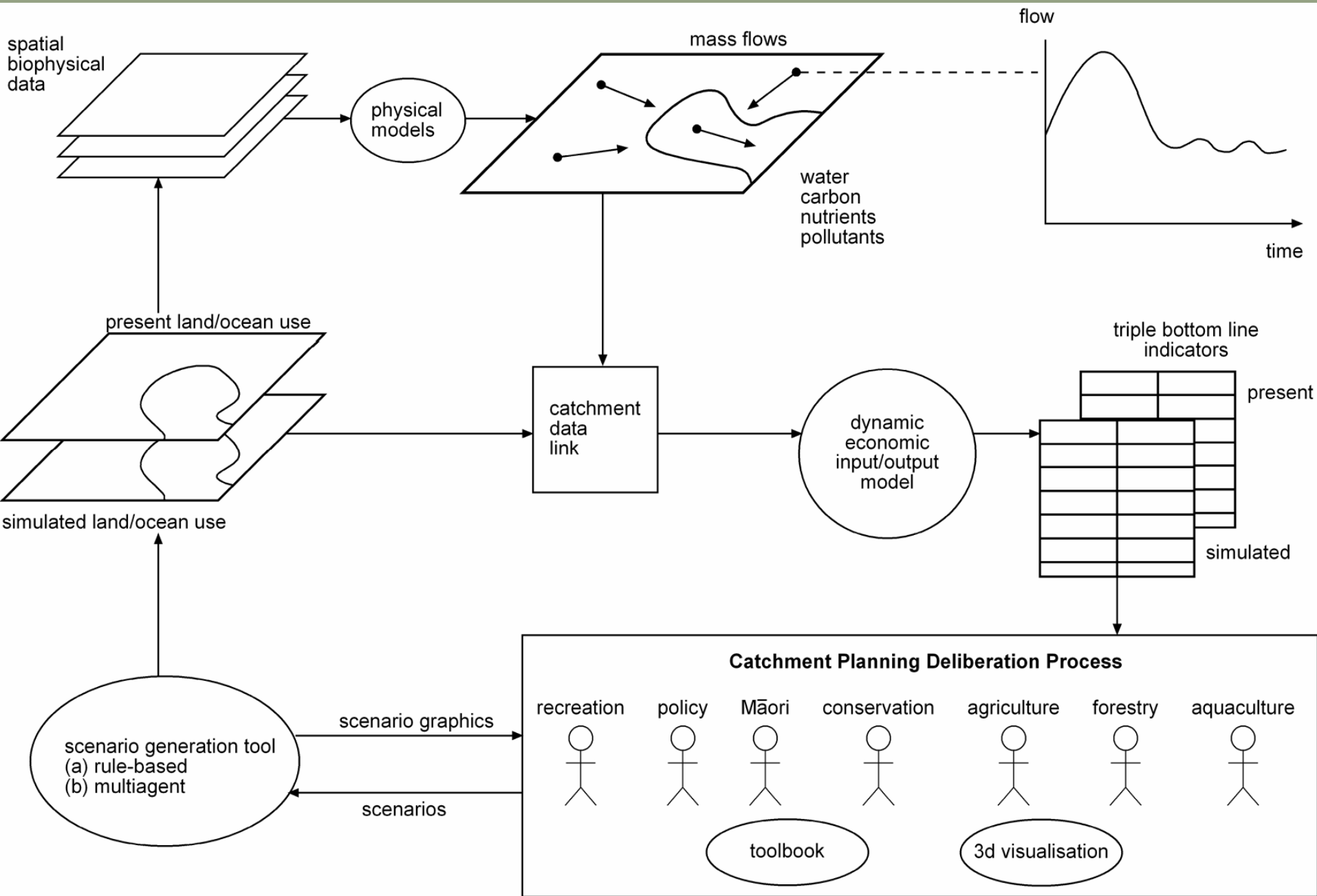
# Dynamic assessment of catchment scenarios



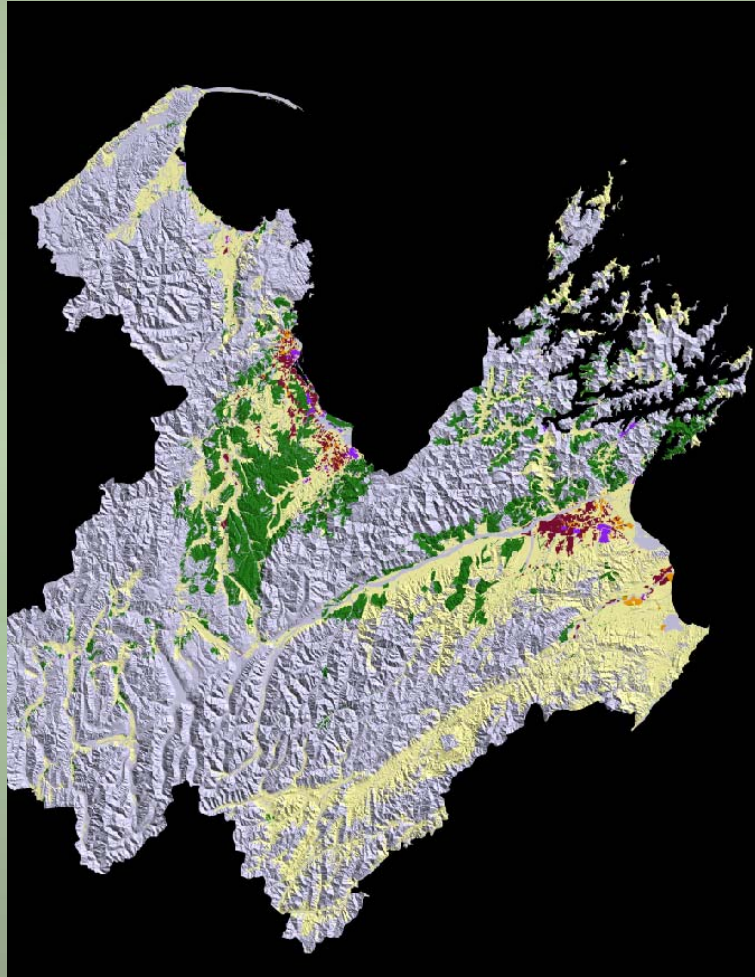
Satellite imaging

G.I.S



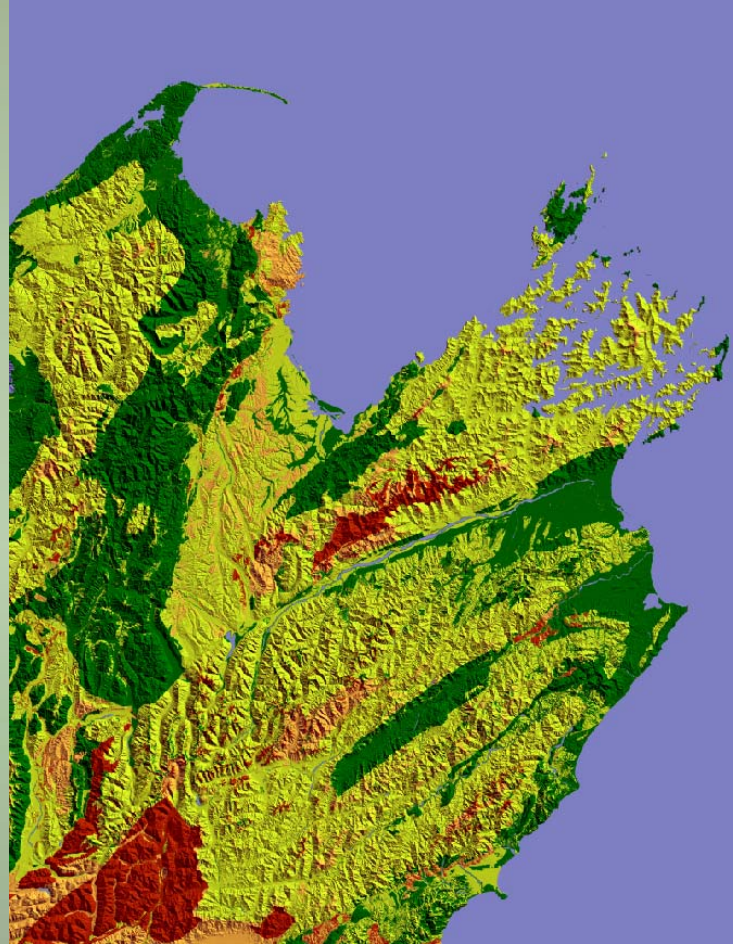


# Present land-based economic sectors from satellite





# Physical model of erosion



# Land-based economic sectors

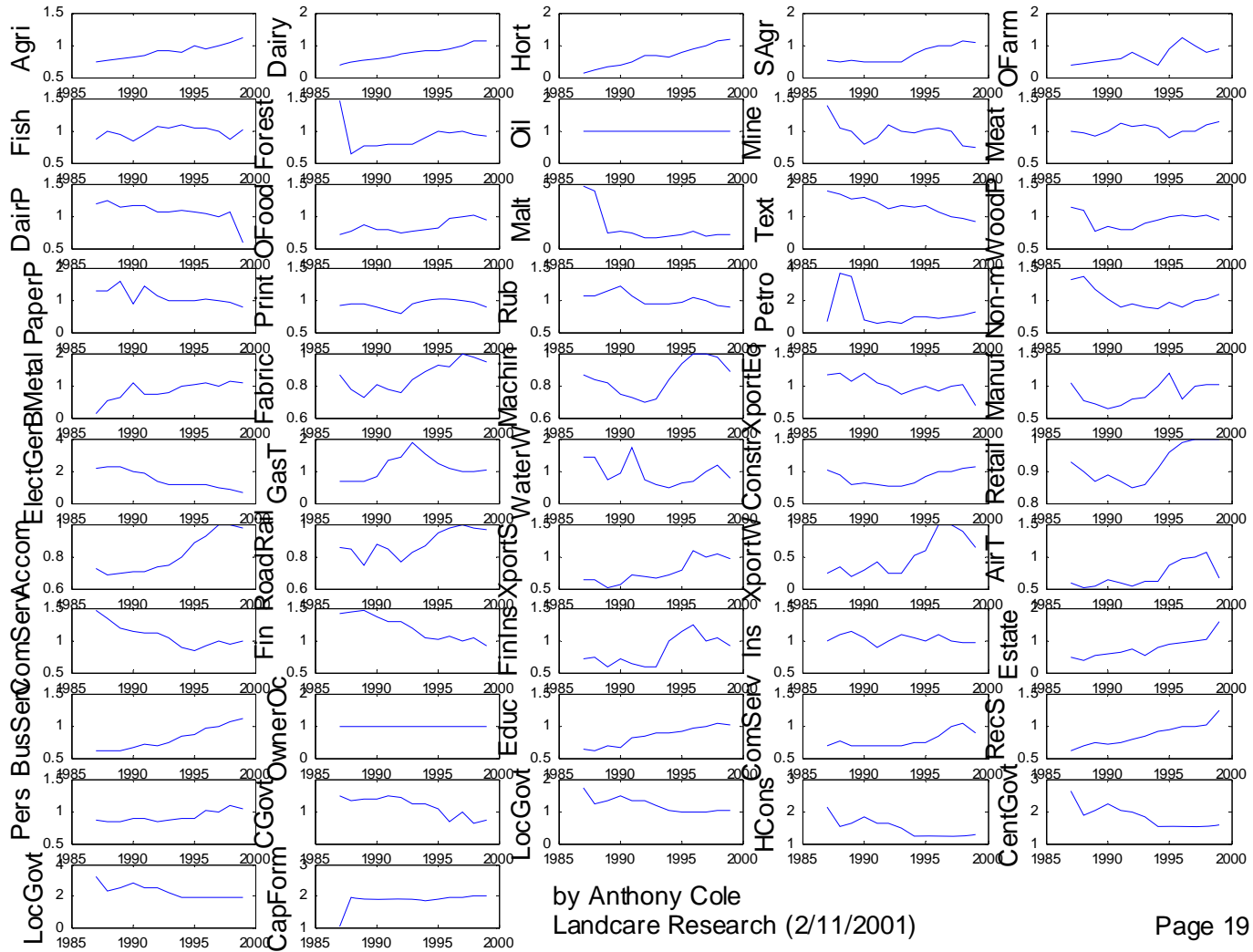
## Tasman district

Landuse	Average sediment yield (t/km <sup>2</sup> /yr)	Area (ha)
Built-up area	110	2126.8
Urban parkland	80	547.7
Surface mine	440	157.7
Dump	140	7.0
Transport infrastructure	280	476.1
Other	190	712655.0
Cropping	100	1313.1
Horticulture	90	9450.6
Pastoral agriculture	210	127259.0
Exotic forestry	180	104615.3



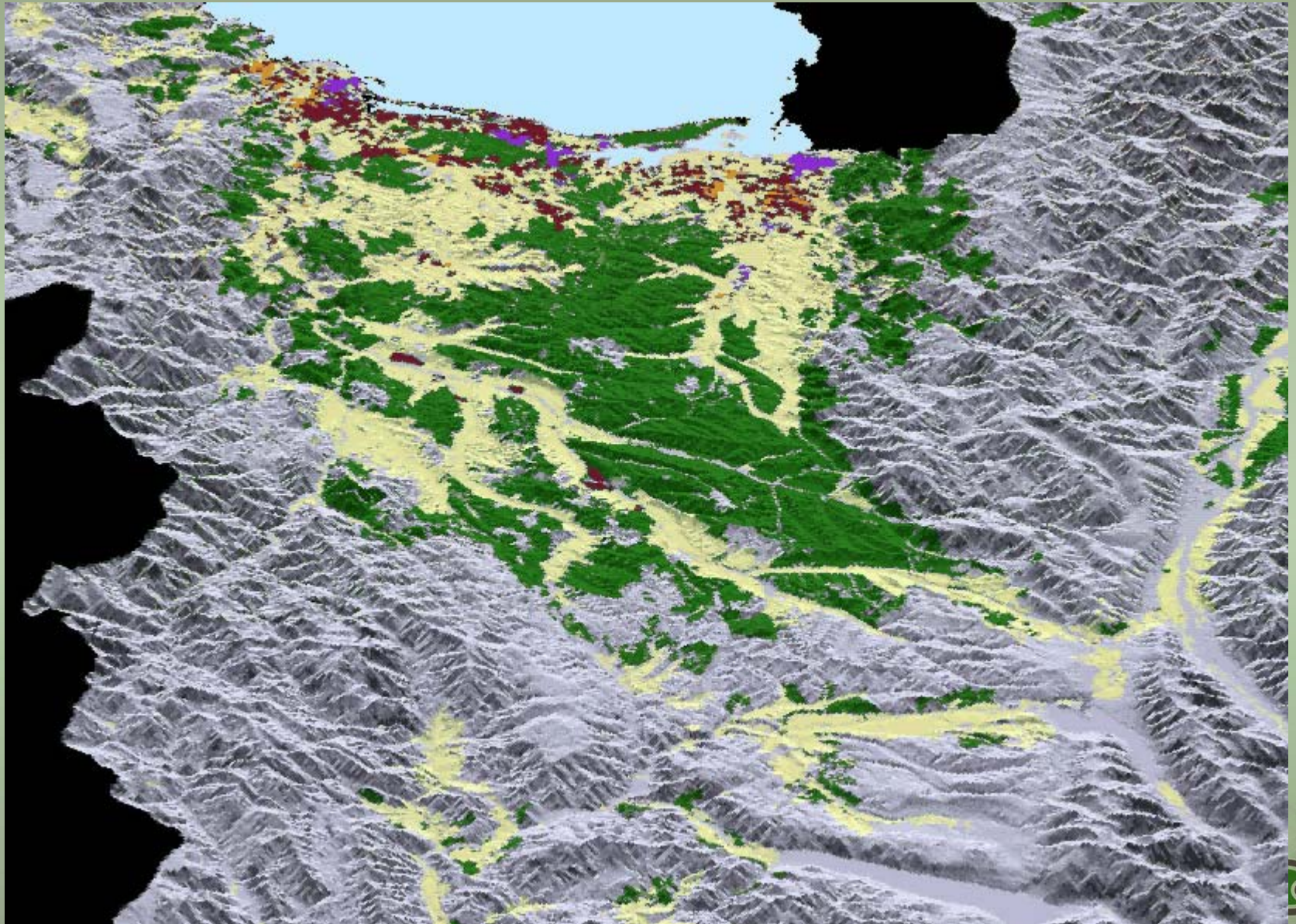
Appendix 3

Dynamic Model Driver Variables by NZSIC



by Anthony Cole  
Landcare Research (2/11/2001)





MAKING A DIFFERENCE FOR A TRULY CLEAN, GREEN NEW ZEALAND



Manaaki Whenua  
Landcare Research

