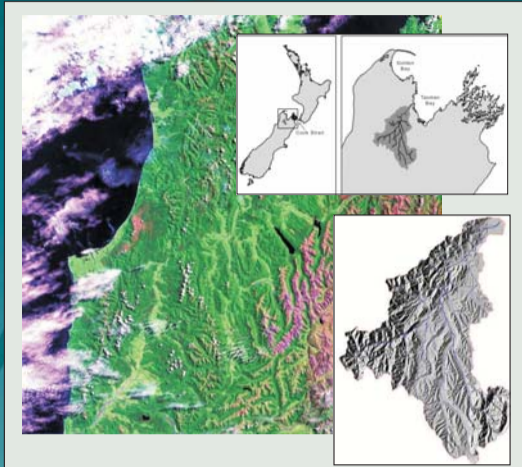
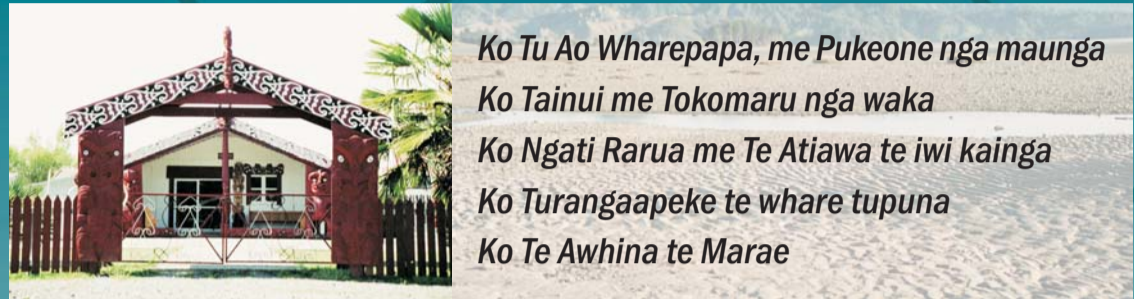




Working with Tangata Whenua – “Working and learning together”



The Motueka catchment is within the rohe of Te Tau Ihu iwi and hapū groups



Te Awhina marae, social and spiritual centre for Motueka iwi

*Ko Tu Ao Wharepapa, me Pukeone nga maunga
 Ko Tainui me Tokomaru nga waka
 Ko Ngati Rarua me Te Atiawa te iwi kainga
 Ko Turangaapeke te whare tupuna
 Ko Te Awhina te Marae*

ICM research commenced in 2000

“a collaborative learning approach with stakeholders to identify and implement sustainable patterns of land, water, and coastal uses, as development pressures increase”

Stakeholder participation is a critical component of ICM

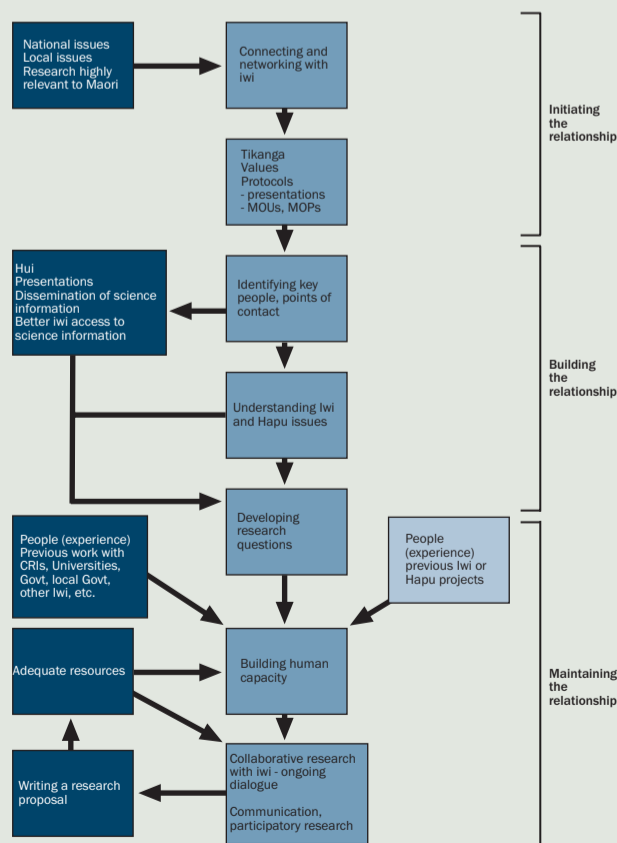
Work with stakeholders to:

- Understand catchment biophysical processes
- Learn together, social learning, collaboration
- Develop issues related research and planning
- Achieve knowledge integration, sharing, and access to information
- Understand different perspectives, resolve conflict
- Build capacity of stakeholders and researchers
- Create tools and methods that stakeholders can use and apply
- Agree on and articulate goals and outcomes
- Improve decision-making
- Identify future scenarios, planning
- Achieve sustainable resource management, planning, and policy

Key areas for ICM research – method and process:

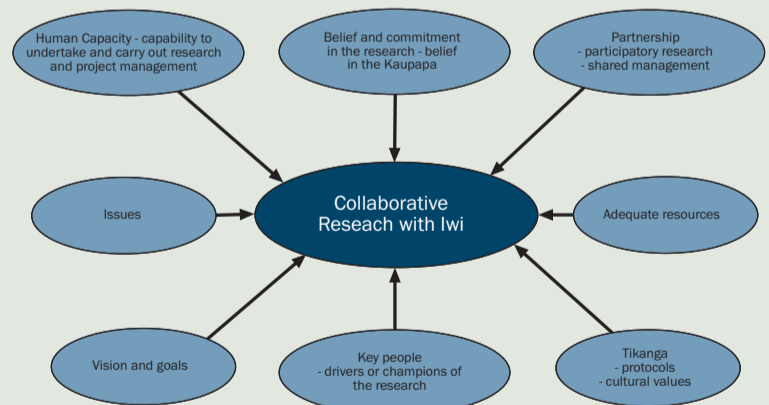
- Relationship building, trust and respect
- Tikanga – understanding culture, custom and protocols
- Identifying and analysing tangata whenua issues and needs
- Understanding tangata whenua aspirations, goals, objectives
- Improve responsiveness of science to Māori needs and issues
- Help build tangata whenua capacity and resourcing
- Learning about, and revitalising mātauranga (Māori knowledge)
- Knowledge integration, developing an interface for using cultural and science knowledge
- Improving access to science knowledge and information
- Collaborative learning, participatory research
- Research planning, development of collaborative environmental-cultural projects
- Decision making for sustainable resource use and management
- Planning and policy

*Toitū te marae o Tane
 Toitū te marae o Tangaroa
 Toitū te iwi
 If the domain of Tane and Tangaroa are healthy,
 the people will be healthy*



The key steps to developing collaborative research with iwi

Making the ‘collaborative model’ work: The key ingredients



Generic collaborative research models are based on learning, experience, reflection, and evaluation.

