



**HELP SYMPOSIUM**

**KIA ORANA**

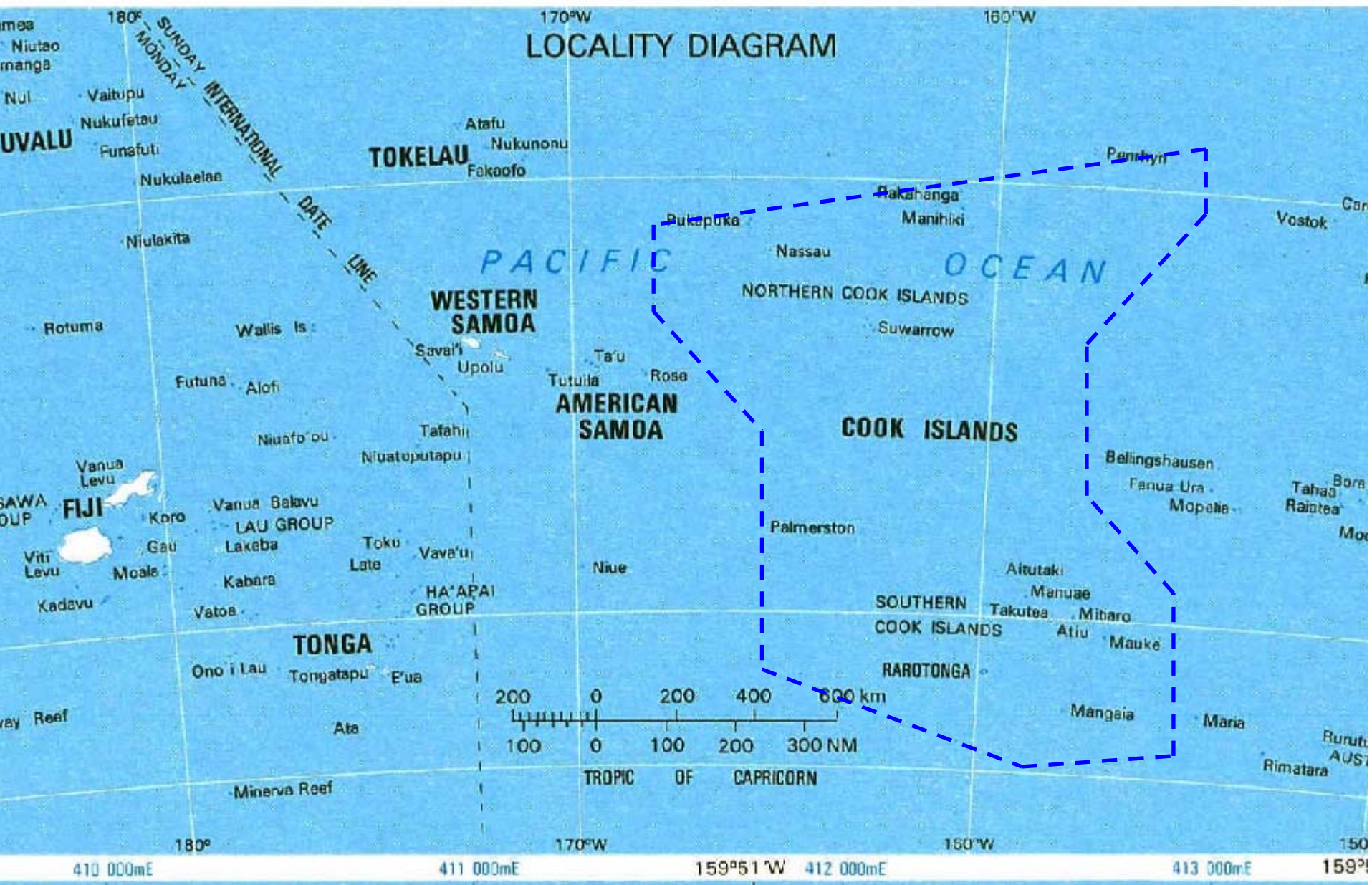
**NELSON**

**NEW ZEALAND**

**05.29.2005**

**7<sup>TH</sup> - 11<sup>TH</sup> NOV 2005**







# OUTER ISLANDS

- **WATER SOURCES**
  - SURFACE RUNOFF
  - GROUNDWATER
  - RAINWATER HARVESTING

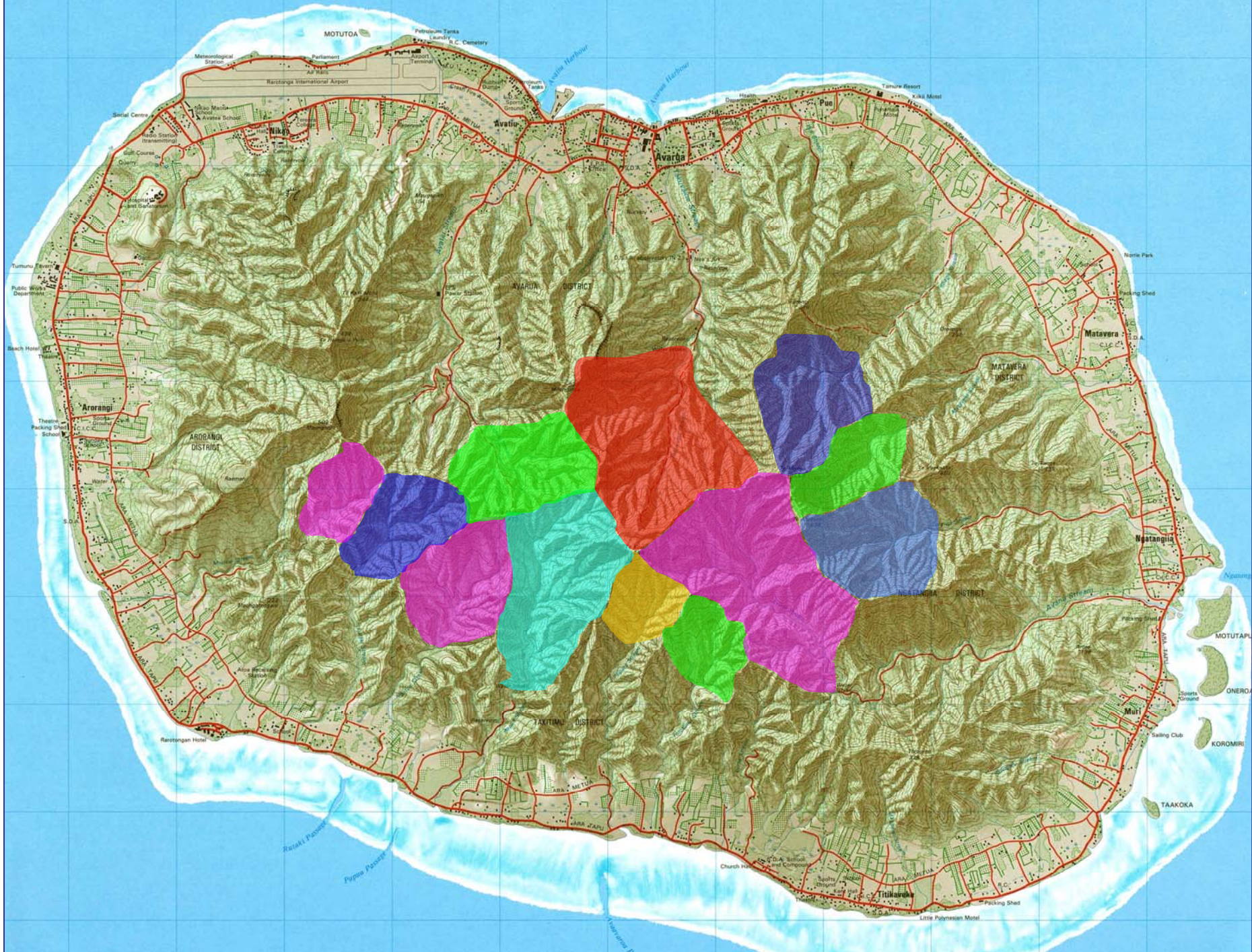


# RAROTONGA

- **WATER SOURCE**
  - SURFACE RUNOFF
  - RAINWATER HARVESTING
- **POTENTIAL SOURCE**
  - GROUNDWATER within the catchments zone









# *Is integrated catchments management practiced in the Cook Islands?*

- No/Yes
  - Traditional practices, water source points reserved
- Small land area
  - Daily life activities need to be in harmony with water resource
  - Subsistence livelihood practices
- Catchments Zoning

# Is ICM practiced in the Cook Islands?

- IWP
  - Watershed
  - Catchments
  - Water Quality
- Community
  - What can the community contribute towards management of the catchment????



# Activities

- Traditional taro planting
- Tourist trekking
- Shooting bats
- Collecting of king bananas
- Collecting of freshwater eels, prawns etc



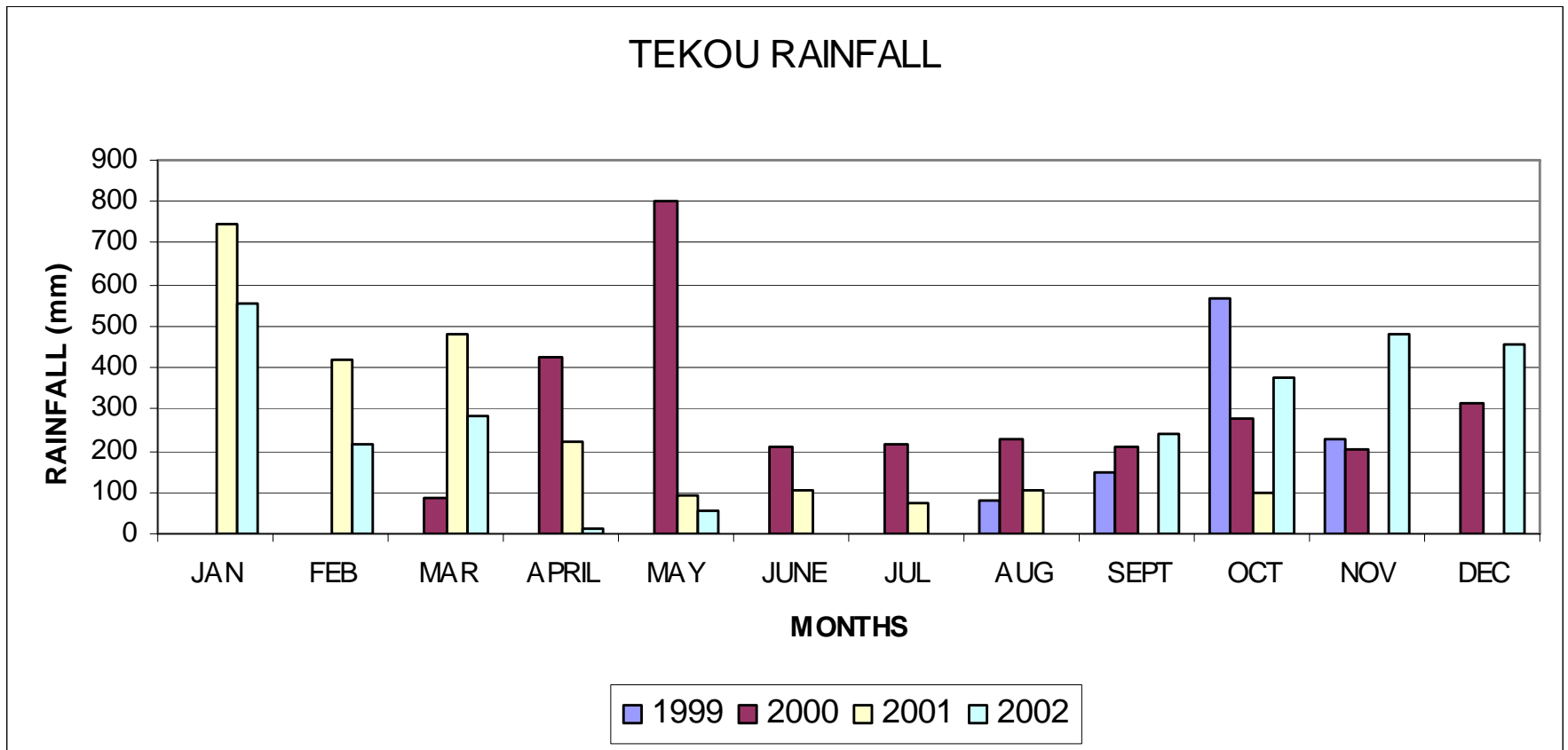


# HYDROLOGY



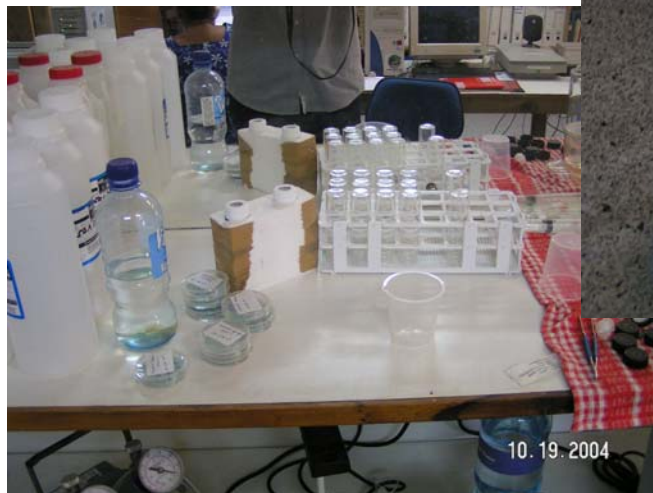


# Hydrology





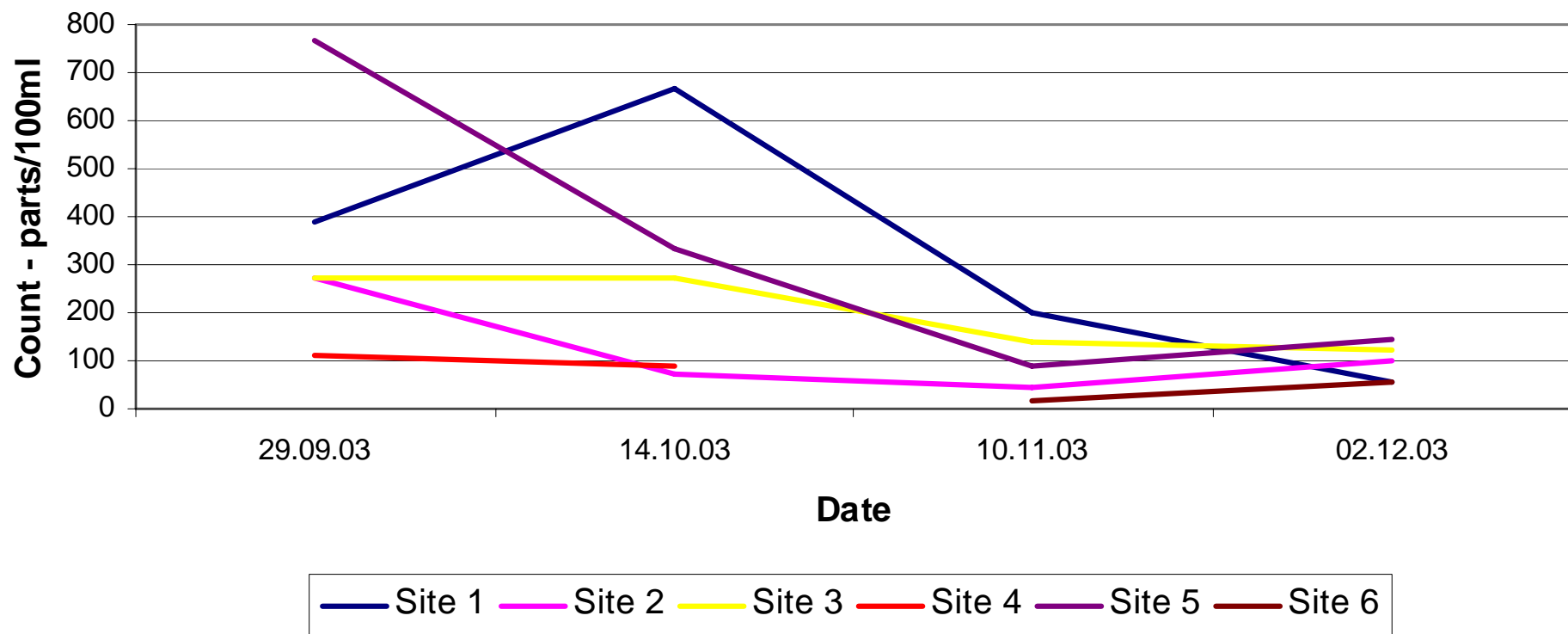
# WATER QUALITY MONITORING





# Water Quality

## Faecal Coliform



# ***AWARENESS***

- 
- Awareness presentations
  - Training workshops

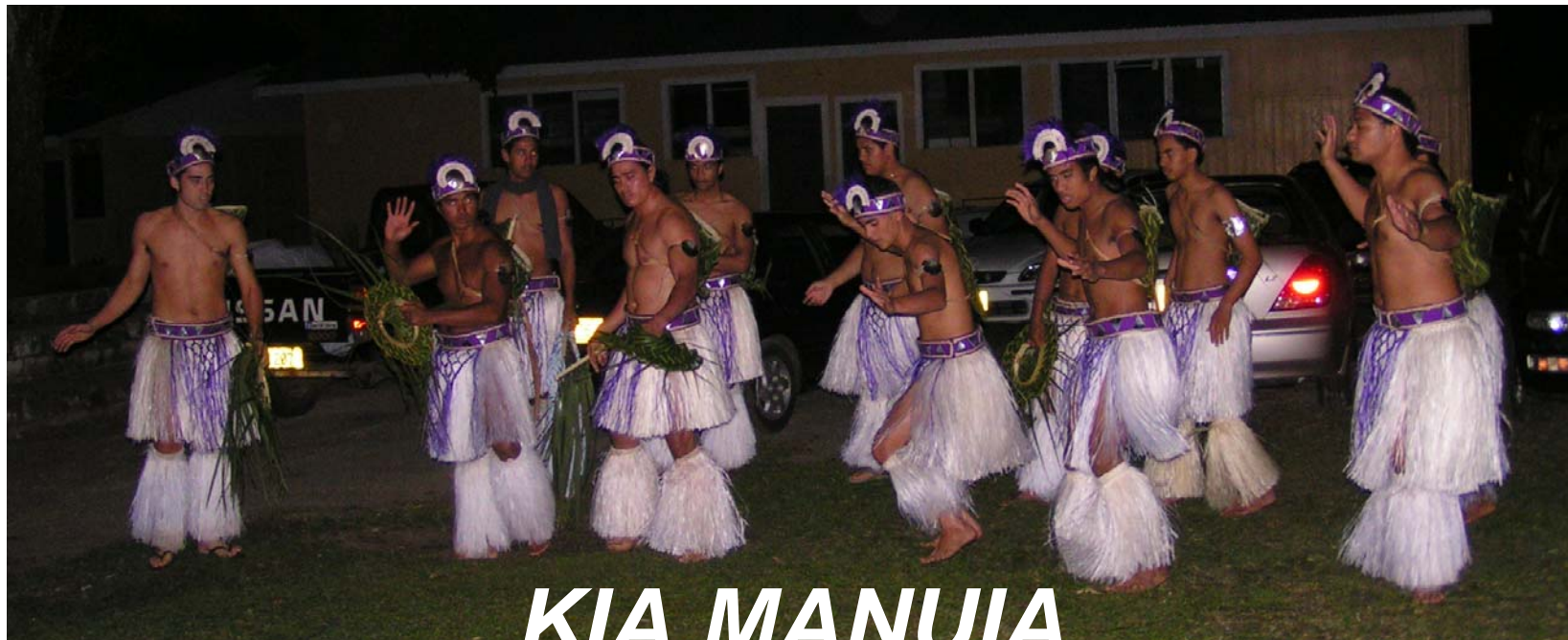
08.16.2004



A group of people are engaged in a community cleanup activity. They are working in a shallow, dark water-filled area, possibly a stream or a large ditch, surrounded by lush green vegetation. One person in a white shirt is holding a large, clear plastic bag filled with debris. Another person in a blue shirt is bending over, reaching into the water. A third person in a black shirt with 'CLEAN UP!' and 'Cook Islands' written on it is also visible. The background shows a concrete wall and more greenery. The overall scene depicts a collaborative effort to maintain the environment.

**What can the  
Community  
contribute to the  
management of the  
water catchments**





***KIA MANUIA***

