



# **Integrated Catchment Management: iwi/hapu values and collaboration**

**ICM-AGM Nelson, October 2003**

**Garth Harmsworth**

**(Te Arawa, Ngāti Tūwharetoa, Ngāti Raukawa)**

**Landcare Research, Private Bag 11-052, Palmerston North**

**HarmsworthG@LandcareResearch.co.nz**





Manaaki Whenua  
Landcare Research



MAKING A DIFFERENCE FOR A TRULY CLEAN, GREEN NEW ZEALAND





# Integrated Catchment Management: from the Ridge Tops to the Sea

Motueka – last 2 years we have been building relationships and collaborative research areas with 3 main iwi: Ngāti Rarua, Te Atiawa, Ngāti Tama, in Te Tau Ihu o te waka a Maui

To date:

ICM programme, Motueka: Building relationships, identifying key people, identifying and understanding iwi/hapu issues, understanding collaborative process and dynamics, developing models, guidelines, networks, strategic research planning, aligning ICM research to iwi and hapu information needs, development of a new FRST ICM programme (2003–) based on working with iwi/hapu Maori through participatory research, continuing relationships and projects

NSOF project – Advancing collaborative projects with iwi, documenting iwi/hapu activities, research, resource management, cultural impact assessment, environmental monitoring, environmental–cultural projects, developing a new project proposal, understanding capacity and iwi/hapu management issues(completed June 2003)



Manaaki Whenua  
Landcare Research

# New project (sub-contract) on iwi/hapu information systems (October 2003)

- To improve decision-making for the sustainable management of natural and cultural resources (e.g. resource consent process, cultural impact assessment)
- Concepts, methods, framework, development of an iwi/hapu information system and database model for recording biophysical resource information, Maori knowledge (matauranga Maori), cultural heritage, cultural values, taonga classifications and inventories
- Geographic Information Systems may be a central part of such a system
- Needs to be networked amongst iwi/hapu members
- Improved access by iwi/hapu to information held by other agencies (e.g. Government, local government, CRIs, private)
- Such a system needs to take into account confidentiality, intellectual property rights, and sensitivity of information, and existing iwi/hapu knowledge systems



Manaaki Whenua  
Landcare Research

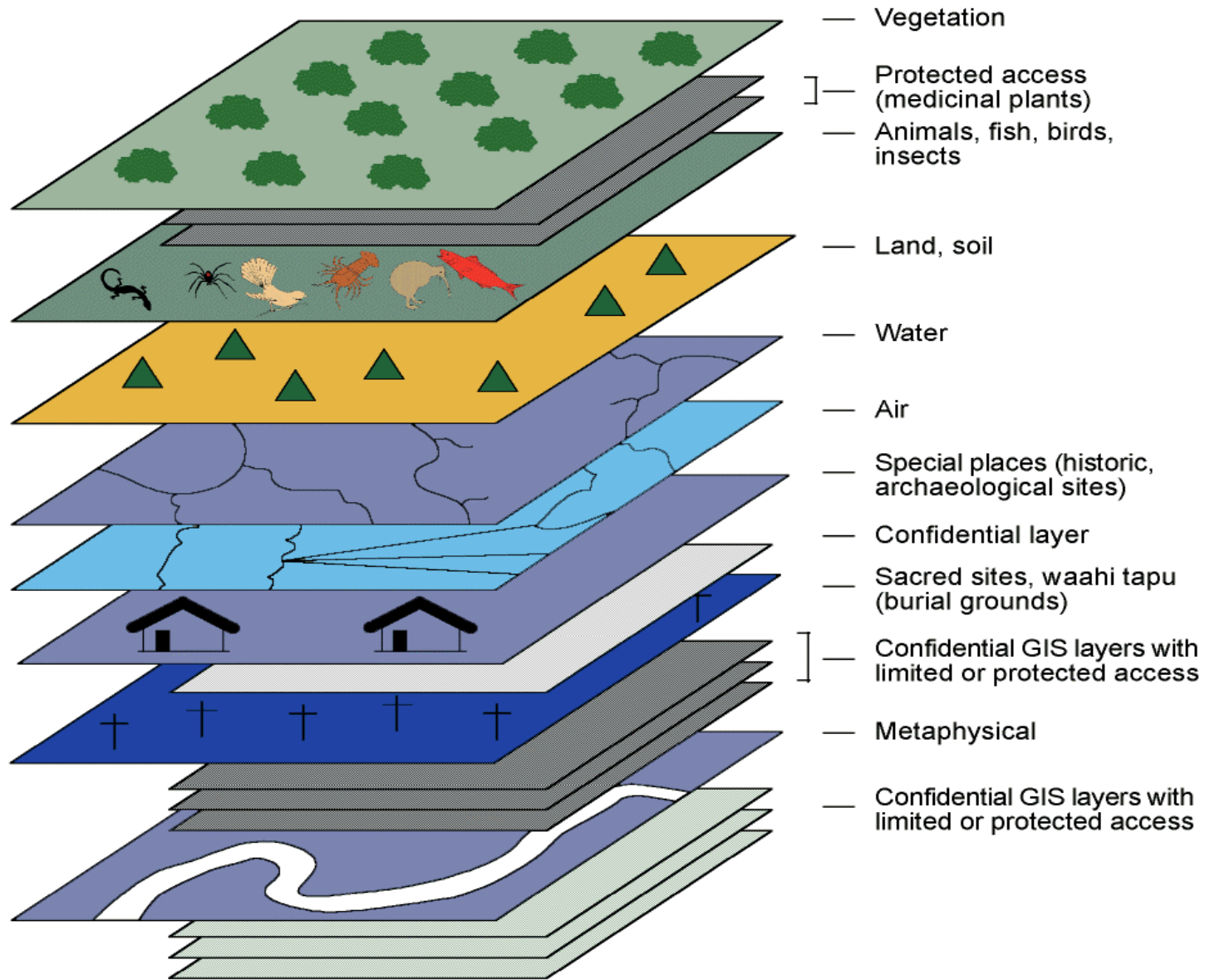


Figure 1: GIS layers and confidential sub-layers



# Contracted milestones and outputs 2003-2005

- Paper on collaborative research with iwi and hapu, for journal of environmental management (June 2004)
- Paper on Maori environmental monitoring in Aotearoa-New Zealand (June 2005)
- Collaborative guidelines and checklist (public release June 2004)
- Presentations and article on iwi/hapu/ICM participatory research
- Add to, update, contribute to ICM web site
- Good practice guidelines for iwi/hapu/local government relationships (article for web site June 2005)
- Manage sub-contract with iwi/hapu (progress reports)
- Improve iwi/hapu collaborative links and participation with ICM programme objectives and researchers



Manaaki Whenua  
Landcare Research



MAKING A DIFFERENCE FOR A TRULY CLEAN, GREEN NEW ZEALAND





Manaaki Whenua  
Landcare Research



Makarika School  
Name: *Calvinina Tehuia*  
Age: 12 Class: 9/8



*Waipua River is bright  
With health*



MAKING A DIFFERENCE FOR A TRULY CLEAN, GREEN NEW ZEALAND

# RM issues nationally as a barrier to collaborative research

- NZ: most iwi management plans still identify the development of partnerships as a major issue
- The principles of the Treaty of Waitangi, although recognised in statute, have not been adequately implemented by statutory authorities
- Consultation and relationships are often weak and fragile, and many problems with process, understanding, recognition and implementation
- Local authorities should adequately resource iwi and hapu for participation under the RMA
- Lack of partnership with local authorities in regard to policy and plan development and resource management decisions



# Guidelines for working together – promoting partnerships, collaborative learning and research

- Collaborative research guidelines
- Collaborative management approaches with tangata whenua
- Conceptual models and frameworks for collaboration and participation
- Good practice guidelines for building partnerships between tangata whenua – local government – stakeholders, and researchers





Manaaki Whenua  
Landcare Research

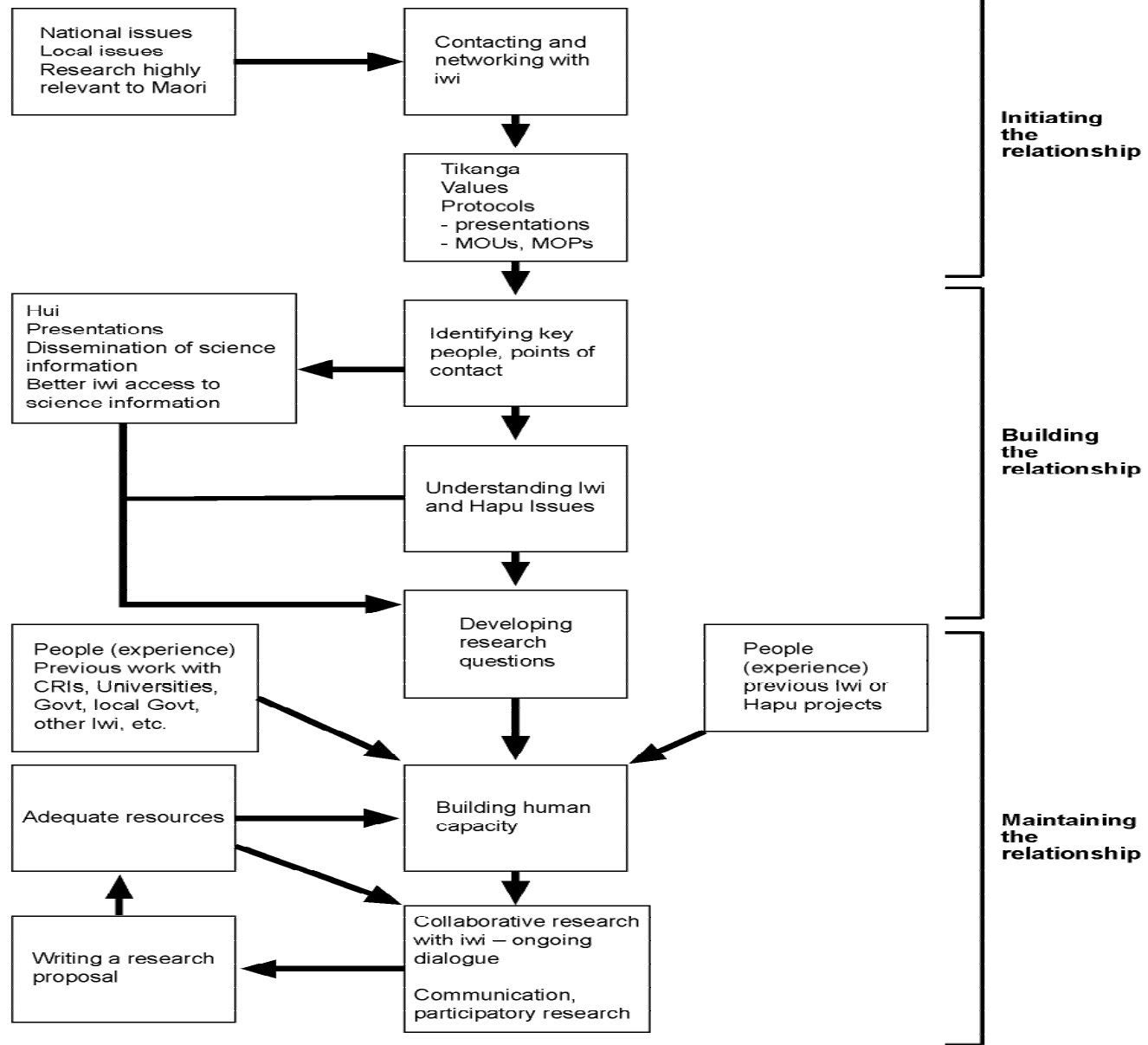


Figure 1: The key steps to developing collaborative research with iwi

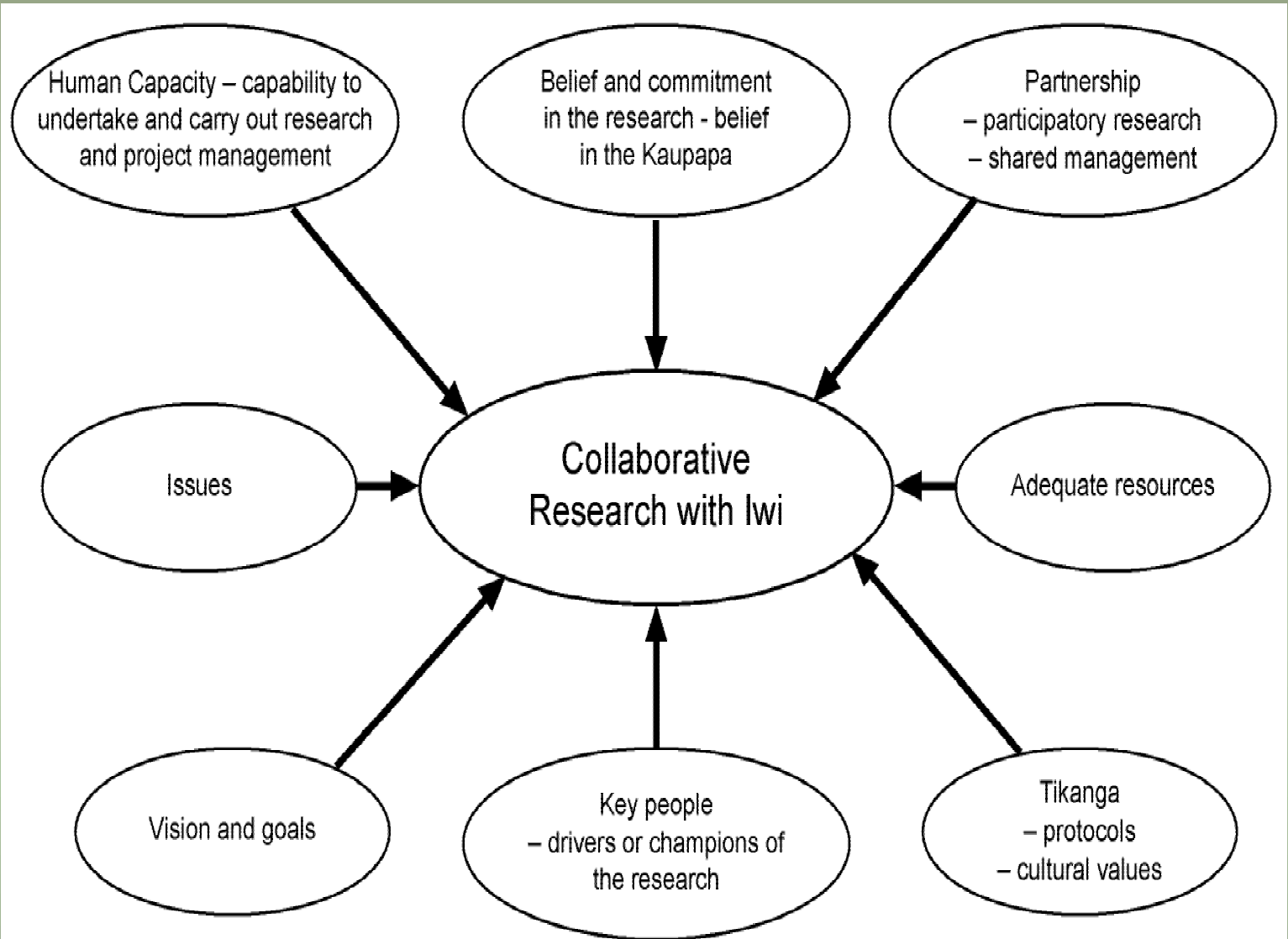


Figure 3: Making the 'collaborative research model' work: The key ingredients





Manaaki Whenua  
Landcare Research



MAKING A DIFFERENCE FOR A TRULY CLEAN, GREEN NEW ZEALAND